

TRPV6 Rabbit Polyclonal Antibody



CAB16128

Product Information

Size:

20uL, 50uL, 100uL, 200uL

Observed MW:

87kDa

Calculated MW:

68kDa/87kDa

Applications:

WB

Reactivity:

Human, Mouse

Protein Background

This gene encodes a member of a family of multipass membrane proteins that functions as calcium channels. The encoded protein contains N-terminal ankyrin repeats, which are required for channel assembly and regulation. Translation initiation for this protein occurs at a non-AUG start codon that is decoded as methionine. This gene is situated next to a closely related gene for transient receptor potential cation channel subfamily V member 5 (TRPV5). This locus has experienced positive selection in non-African populations, resulting in several non-synonymous codon differences among individuals of different genetic backgrounds.

Immunogen information

Gene ID:

55503

Uniprot

Q9H1D0

Synonyms:

TRPV6; ABP/ZF; CAT1; CATL; ECAC2; HSA277909; LP6728; ZFAB

Antibody Information

Recommended dilutions:

WB 1:500 - 1:2000

Source:

Rabbit

Isotype:

IgG

Purification:

Affinity purification

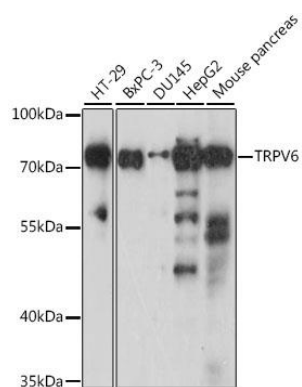
Immunogen:

A synthetic peptide corresponding to a sequence within amino acids 1-100 of human TRPV6 (NP_061116.5).

Storage:

Store at -20°C. Avoid freeze / thaw cycles. Buffer: PBS with 0.02% sodium azide, 50% glycerol, pH7.3.

Product Images



Western blot analysis of extracts of various cell lines, using TRPV6 antibody (CAB16128) at 1:1000 dilution. Secondary antibody: HRP Goat Anti-Rabbit IgG (H+L) (CABS014) at 1:10000 dilution. Lysates/proteins: 25ug per lane. Blocking buffer: 3% nonfat dry milk in TBST. Detection: ECL Basic Kit (CABM00020). Exposure time: 30s.