

IL23R Rabbit Polyclonal Antibody



CAB1613

Product Information

Size:

20uL, 50uL, 100uL, 200uL

Observed MW:

68kDa

Calculated MW:

20kDa/25kDa/30kDa/40kDa/
42kDa/71kDa

Applications:

WB IHC IF

Reactivity:

Human, Mouse, Rat

Protein Background

The protein encoded by this gene is a subunit of the receptor for IL23A/IL23. This protein pairs with the receptor molecule IL12RB1/IL12Rbeta1, and both are required for IL23A signaling. This protein associates constitutively with Janus kinase 2 (JAK2), and also binds to transcription activator STAT3 in a ligand-dependent manner.

Immunogen information

Gene ID:

149233

Uniprot

Q5VWK5

Synonyms:

IL23R

Antibody Information

Recommended dilutions:

WB 1:500 - 1:2000 IHC 1:50
- 1:200 IF 1:50 - 1:100

Source:

Rabbit

Isotype:

IgG

Purification:

Affinity purification

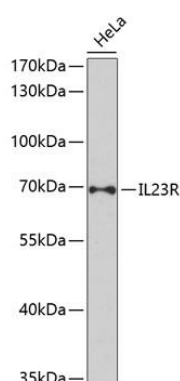
Immunogen:

Recombinant fusion protein containing a sequence corresponding to amino acids 405-629 of human IL23R (NP_653302.2).

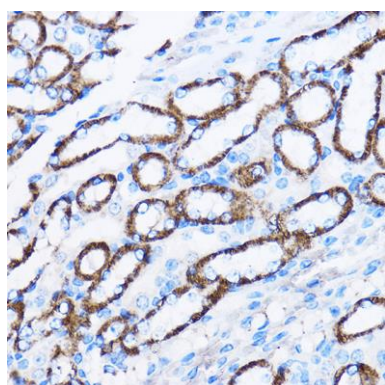
Storage:

Store at -20°C. Avoid freeze / thaw cycles. Buffer: PBS with 0.02% sodium azide, 50% glycerol, pH7.3.

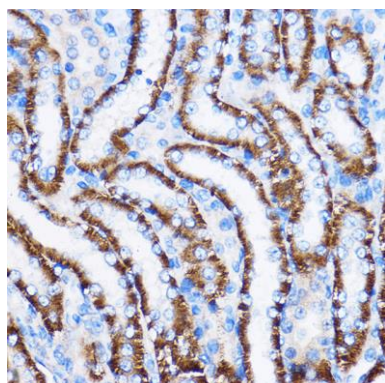
Product Images



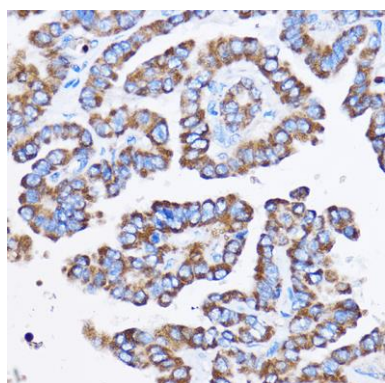
Western blot analysis of extracts of HeLa cells, using IL23R antibody (CAB1613) at 1:1000 dilution. Secondary antibody: HRP Goat Anti-Rabbit IgG (H+L) (CABS014) at 1:10000 dilution. Lysates/proteins: 25ug per lane. Blocking buffer: 3% nonfat dry milk in TBST. Detection: ECL Enhanced Kit (CABM00021). Exposure time: 90s.



Immunohistochemistry of paraffin-embedded Mouse kidney using IL23R Rabbit pAb (CAB1613) at dilution of 1:100 (40x lens).



Immunohistochemistry of paraffin-embedded Rat kidney using IL23R Rabbit pAb (CAB1613) at dilution of 1:100 (40x lens).



Immunohistochemistry of paraffin-embedded Human thyroid cancer using IL23R Rabbit pAb (CAB1613) at dilution of 1:100 (40x lens).