

KCNQ5 Rabbit Polyclonal Antibody



CAB16134

Product Information

Size:

20uL, 50uL, 100uL, 200uL

Observed MW:

102kDa

Calculated MW:

46kDa/89kDa/101kDa/102kDa/103kDa/104kDa

Applications:

WB

Reactivity:

Human, Mouse, Rat

Antibody Information

Recommended dilutions:

WB 1:500 - 1:2000

Source:

Rabbit

Isotype:

IgG

Purification:

Affinity purification

Protein Background

This gene is a member of the KCNQ potassium channel gene family that is differentially expressed in subregions of the brain and in skeletal muscle. The protein encoded by this gene yields currents that activate slowly with depolarization and can form heteromeric channels with the protein encoded by the KCNQ3 gene. Currents expressed from this protein have voltage dependences and inhibitor sensitivities in common with M-currents. They are also inhibited by M1 muscarinic receptor activation. Multiple transcript variants encoding different isoforms have been found for this gene.

Immunogen information

Gene ID:

56479

Uniprot

Q9NR82

Synonyms:

KCNQ5; Kv7.5

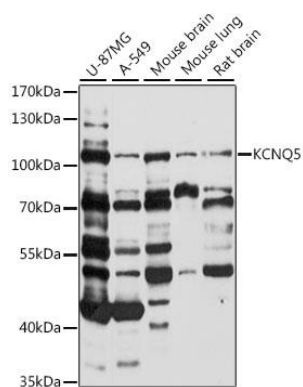
Immunogen:

Recombinant fusion protein containing a sequence corresponding to amino acids 624-923 of human KCNQ5 (NP_001153602.1).

Storage:

Store at -20°C. Avoid freeze / thaw cycles. Buffer: PBS with 0.02% sodium azide, 50% glycerol, pH7.3.

Product Images



Western blot analysis of extracts of various cell lines, using KCNQ5 antibody (CAB16134) at 1:1000 dilution. Secondary antibody: HRP Goat Anti-Rabbit IgG (H+L) (CABS014) at 1:10000 dilution. Lysates/proteins: 25ug per lane. Blocking buffer: 3% nonfat dry milk in TBST. Detection: ECL Basic Kit (CABM00020). Exposure time: 30s.