

# CEP290 Rabbit Polyclonal Antibody



CAB16147

## Product Information

### Size:

20uL, 50uL, 100uL, 200uL

### Observed MW:

290kDa

### Calculated MW:

180kDa/290kDa

### Applications:

WB

### Reactivity:

Human

## Antibody Information

### Recommended dilutions:

WB 1:500 - 1:2000

### Source:

Rabbit

### Isotype:

IgG

### Purification:

Affinity purification

## Protein Background

This gene encodes a protein with 13 putative coiled-coil domains, a region with homology to SMC chromosome segregation ATPases, six KID motifs, three tropomyosin homology domains and an ATP/GTP binding site motif A. The protein is localized to the centrosome and cilia and has sites for N-glycosylation, tyrosine sulfation, phosphorylation, N-myristoylation, and amidation. Mutations in this gene have been associated with Joubert syndrome and nephronophthisis and the presence of antibodies against this protein is associated with several forms of cancer.

## Immunogen information

### Gene ID:

80184

### Uniprot

O15078

### Synonyms:

CEP290; 3H11Ag; BBS14; CT87; JBTS5; LCA10; MKS4; NPHP6; POC3; SLSN6; rd16

### Immunogen:

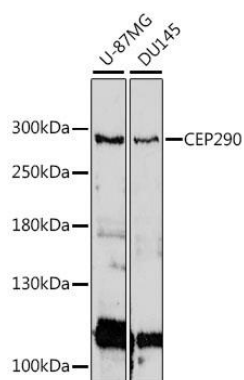
Recombinant fusion protein containing a sequence corresponding to amino acids 950-1050 of human CEP290 (NP\_079390.3).

### Storage:

Store at -20°C. Avoid freeze / thaw cycles. Buffer: PBS with 0.02% sodium azide, 50% glycerol, pH7.3.

## Product Images

---



Western blot analysis of extracts of various cell lines, using CEP290 antibody (CAB16147) at 1:1000 dilution. Secondary antibody: HRP Goat Anti-Rabbit IgG (H+L) (CABS014) at 1:10000 dilution. Lysates/proteins: 25ug per lane. Blocking buffer: 3% nonfat dry milk in TBST. Detection: ECL Basic Kit (CABM00020). Exposure time: 30s.