

# MED25 Rabbit Polyclonal Antibody



CAB16150

## Product Information

### Size:

20uL, 50uL, 100uL, 200uL

### Observed MW:

78kDa

### Calculated MW:

55kDa/76kDa/78kDa/82kDa/  
84kDa

### Applications:

WB IF

### Reactivity:

Human, Mouse, Rat

## Protein Background

This gene encodes a component of the transcriptional coactivator complex termed the Mediator complex. This complex is required for transcription of most RNA polymerase II-dependent genes. The encoded protein plays a role in chromatin modification and in preinitiation complex assembly. Mutations in this gene are associated with Charcot-Marie-Tooth disease type 2B2.

## Immunogen information

### Gene ID:

81857

### Uniprot

Q71SY5

### Synonyms:

MED25; ACID1; ARC92; BVSYS; CMT2B2; P78; PTOV2; TCBAP0758

## Antibody Information

### Recommended dilutions:

WB 1:500 - 1:2000 IF 1:50 -  
1:200

### Source:

Rabbit

### Isotype:

IgG

### Purification:

Affinity purification

### Immunogen:

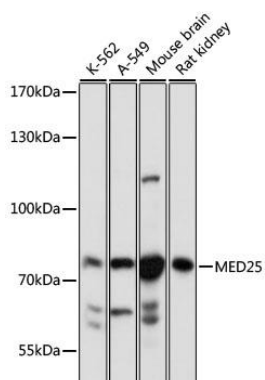
Recombinant fusion protein containing a sequence corresponding to amino acids 30-200 of human MED25 (NP\_112235.2).

### Storage:

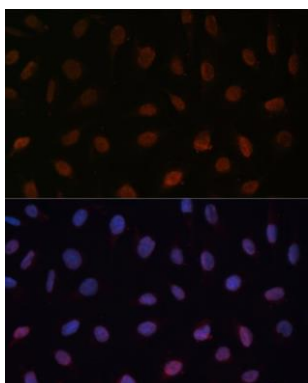
Store at -20°C. Avoid freeze / thaw cycles. Buffer: PBS with 0.02% sodium azide, 50% glycerol, pH7.3.

## Product Images

---



Western blot analysis of extracts of various cell lines, using MED25 antibody (CAB16150) at 1:1000 dilution. Secondary antibody: HRP Goat Anti-Rabbit IgG (H+L) (CABS014) at 1:10000 dilution. Lysates/proteins: 25ug per lane. Blocking buffer: 3% nonfat dry milk in TBST. Detection: ECL Basic Kit (CABM00020). Exposure time: 5s.



Immunofluorescence analysis of U-2 OS cells using MED25 Polyclonal Antibody (CAB16150) at dilution of 1:100 (40x lens). Blue: DAPI for nuclear staining.