

# HPS4 Rabbit Polyclonal Antibody



**CAB16157**

---

## Product Information

### Size:

20uL, 50uL, 100uL, 200uL

### Observed MW:

115kDa

### Calculated MW:

58kDa/76kDa/78kDa

### Applications:

WB IF

### Reactivity:

Human, Mouse, Rat

## Antibody Information

### Recommended dilutions:

WB 1:500 - 1:2000 IF 1:50 - 1:200

### Source:

Rabbit

### Isotype:

IgG

### Purification:

Affinity purification

## Protein Background

This gene encodes a protein component of biogenesis of lysosome-related organelles complexes (BLOC). BLOC complexes are important for the formation of endosomal-lysosomal organelles such as melanosomes and platelet dense granules. Mutations in this gene result in subtype 4 of Hermansky-Pudlak syndrome, a form of albinism. Alternative splicing results in multiple transcript variants.

## Immunogen information

### Gene ID:

89781

### Uniprot

Q9NQG7

### Synonyms:

HPS4; BLOC3S2; LE

### Immunogen:

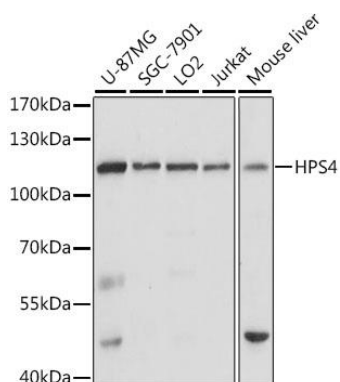
A synthetic peptide corresponding to a sequence within amino acids 550-650 of human HPS4 (NP\_690054.1).

### Storage:

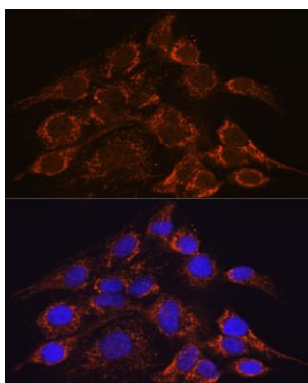
Store at -20°C. Avoid freeze / thaw cycles. Buffer: PBS with 0.02% sodium azide, 50% glycerol, pH7.3.

## Product Images

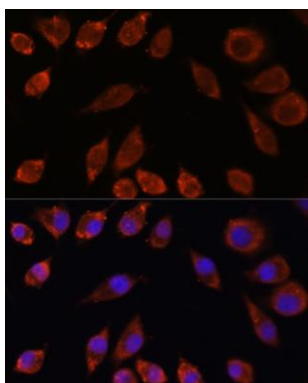
---



Western blot analysis of extracts of various cell lines, using HPS4 antibody (CAB16157) at 1:1000 dilution. Secondary antibody: HRP Goat Anti-Rabbit IgG (H+L) (CABS014) at 1:10000 dilution. Lysates/proteins: 25ug per lane. Blocking buffer: 3% nonfat dry milk in TBST. Detection: ECL Basic Kit (CABM00020). Exposure time: 1s.



Immunofluorescence analysis of C6 cells using HPS4 antibody (CAB16157) at dilution of 1:100. Blue: DAPI for nuclear staining.



Immunofluorescence analysis of L929 cells using HPS4 antibody (CAB16157) at dilution of 1:100. Blue: DAPI for nuclear staining.