

DIS3L Rabbit Polyclonal Antibody



CAB16160

Product Information

Size:

20uL, 50uL, 100uL, 200uL

Observed MW:

130kDa

Calculated MW:

86kDa/105kDa/111kDa/120kDa

Applications:

WB IHC

Reactivity:

Human, Mouse, Rat

Antibody Information

Recommended dilutions:

WB 1:500 - 1:2000 IHC 1:50 - 1:200

Source:

Rabbit

Isotype:

IgG

Purification:

Affinity purification

Protein Background

The cytoplasmic RNA exosome complex degrades unstable mRNAs and is involved in the regular turnover of other mRNAs. The protein encoded by this gene contains 3'-5' exoribonuclease activity and is a catalytic component of this complex.

Immunogen information

Gene ID:

115752

Uniprot

Q8TF46

Synonyms:

DIS3L; DIS3L1

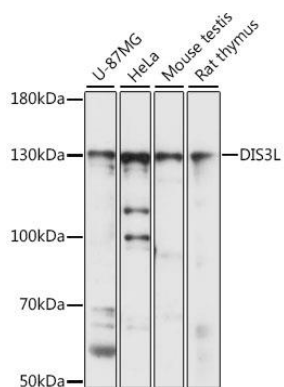
Immunogen:

Recombinant fusion protein containing a sequence corresponding to amino acids 1-300 of human DIS3L (NP_588616.1).

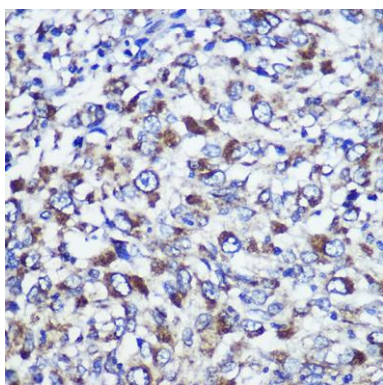
Storage:

Store at -20°C. Avoid freeze / thaw cycles. Buffer: PBS with 0.02% sodium azide, 50% glycerol, pH7.3.

Product Images



Western blot analysis of extracts of various cell lines, using DIS3L antibody (CAB16160) at 1:1000 dilution. Secondary antibody: HRP Goat Anti-Rabbit IgG (H+L) (CABS014) at 1:10000 dilution. Lysates/proteins: 25ug per lane. Blocking buffer: 3% nonfat dry milk in TBST. Detection: ECL Basic Kit (CABM00020). Exposure time: 15s.



Immunohistochemistry of paraffin-embedded Human liver cancer using DIS3L Rabbit pAb (CAB16160) at dilution of 1:100 (40x lens).