

WBSCR27 Rabbit Polyclonal Antibody



CAB16176

Product Information

Size:

20uL, 50uL, 100uL, 200uL

Observed MW:

26kDa

Calculated MW:

26kDa

Applications:

WB IHC

Reactivity:

Human, Mouse, Rat

Protein Background

This gene encodes a protein belonging to ubiE/COQ5 methyltransferase family. The gene is deleted in Williams syndrome, a multisystem developmental disorder caused by the deletion of contiguous genes at 7q11.22-q11.23.

Immunogen information

Gene ID:

155368

Uniprot

Q8N6F8

Synonyms:

METTL27; WBSCR27

Antibody Information

Recommended dilutions:

WB 1:500 - 1:2000 IHC 1:50
- 1:200

Source:

Rabbit

Isotype:

IgG

Purification:

Affinity purification

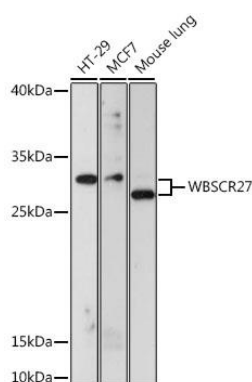
Immunogen:

Recombinant fusion protein containing a sequence corresponding to amino acids 1-245 of human WBSCR27 (NP_689772.2).

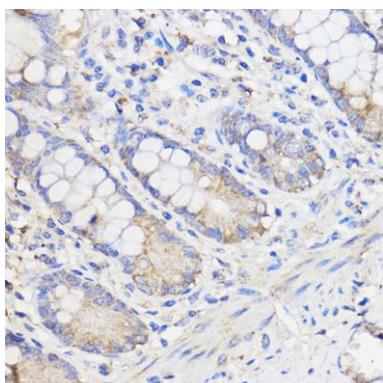
Storage:

Store at -20°C. Avoid freeze / thaw cycles. Buffer: PBS with 0.02% sodium azide, 50% glycerol, pH7.3.

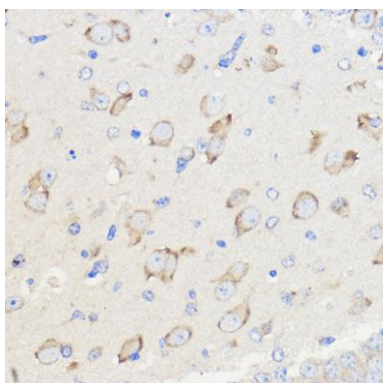
Product Images



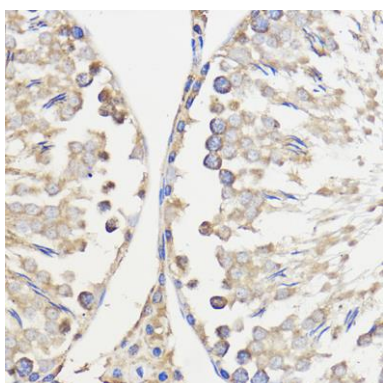
Western blot analysis of extracts of various cell lines, using WBSR27 antibody (CAB16176) at 1:1000 dilution. Secondary antibody: HRP Goat Anti-Rabbit IgG (H+L) (CABS014) at 1:10000 dilution. Lysates/proteins: 25ug per lane. Blocking buffer: 3% nonfat dry milk in TBST. Detection: ECL Basic Kit (CABM00020). Exposure time: 15s.



Immunohistochemistry of paraffin-embedded Human colon using WBSR27 Rabbit pAb (CAB16176) at dilution of 1:50 (40x lens).



Immunohistochemistry of paraffin-embedded Mouse brain using WBSR27 Rabbit pAb (CAB16176) at dilution of 1:50 (40x lens).



Immunohistochemistry of paraffin-embedded Rat testis using WBSR27 Rabbit pAb (CAB16176) at dilution of 1:50 (40x lens).