

USP33 Rabbit Polyclonal Antibody



CAB16187

Product Information

Size:

20uL, 50uL, 100uL, 200uL

Observed MW:

107kDa

Calculated MW:

93kDa/103kDa/106kDa

Applications:

WB IHC IF

Reactivity:

Human, Mouse, Rat

Protein Background

This gene encodes a deubiquinating enzyme important in a variety of processes, including Slit-dependent cell migration and beta-2 adrenergic receptor signaling. The protein is negatively regulated through ubiquitination by von Hippel-Lindau tumor protein (VHL). Alternative splicing results in multiple transcript variants and protein isoforms.

Immunogen information

Gene ID:

23032

Uniprot

Q8TEY7

Synonyms:

USP33; VDU1

Antibody Information

Recommended dilutions:

WB 1:500 - 1:2000 IHC 1:50
- 1:200 IF 1:50 - 1:100

Source:

Rabbit

Isotype:

IgG

Purification:

Affinity purification

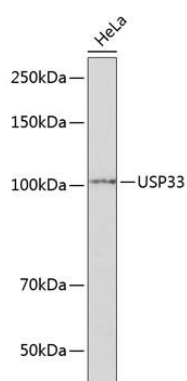
Immunogen:

Recombinant fusion protein containing a sequence corresponding to amino acids 290-400 of human USP33 (NP_963920.1).

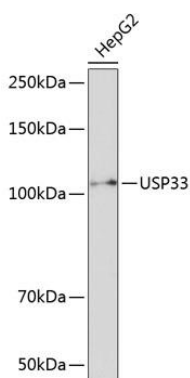
Storage:

Store at -20°C. Avoid freeze / thaw cycles. Buffer: PBS with 0.02% sodium azide, 50% glycerol, pH7.3.

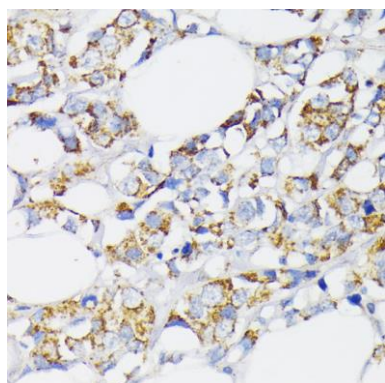
Product Images



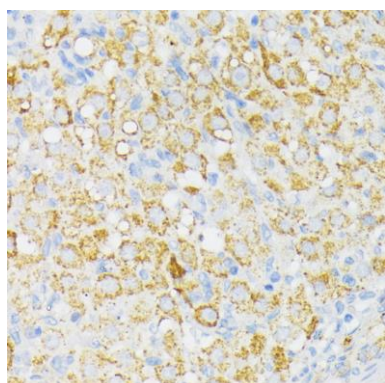
Western blot analysis of extracts of HeLa cells, using USP33 Polyclonal Antibody (CAB16187) at 1:1000 dilution. Secondary antibody: HRP Goat Anti-Rabbit IgG (H+L) (CABS014) at 1:10000 dilution. Lysates/proteins: 25ug per lane. Blocking buffer: 3% nonfat dry milk in TBST. Detection: ECL Basic Kit (CABM00020). Exposure time: 1min.



Western blot analysis of extracts of HepG2 cells, using USP33 Polyclonal Antibody (CAB16187) at 1:1000 dilution. Secondary antibody: HRP Goat Anti-Rabbit IgG (H+L) (CABS014) at 1:10000 dilution. Lysates/proteins: 25ug per lane. Blocking buffer: 3% nonfat dry milk in TBST. Detection: ECL Basic Kit (CABM00020). Exposure time: 3min.



Immunohistochemistry of paraffin-embedded human breast cancer using USP33 antibody (CAB16187) at dilution of 1:100 (40x lens).



Immunohistochemistry of paraffin-embedded rat ovary using USP33 antibody (CAB16187) at dilution of 1:100 (40x lens).