

# PADI4 Rabbit Polyclonal Antibody



**CAB16188**

---

## Product Information

### Size:

20uL, 50uL, 100uL, 200uL

### Observed MW:

Refer to figures

### Calculated MW:

74kDa

### Applications:

WB IHC

### Reactivity:

Human, Mouse, Rat

## Protein Background

This gene is a member of a gene family which encodes enzymes responsible for the conversion of arginine residues to citrulline residues. This gene may play a role in granulocyte and macrophage development leading to inflammation and immune response.

## Immunogen information

### Gene ID:

23569

### Uniprot

Q9UM07

### Synonyms:

PADI4; PAD; PAD4; PADI5; PDI4; PDI5

## Antibody Information

### Recommended dilutions:

WB 1:500 - 1:2000 IHC 1:50  
- 1:200

### Source:

Rabbit

### Isotype:

IgG

### Purification:

Affinity purification

### Immunogen:

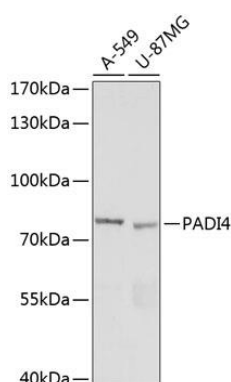
Recombinant fusion protein containing a sequence corresponding to amino acids 374-550 of human PADI4 (NP\_036519.2).

### Storage:

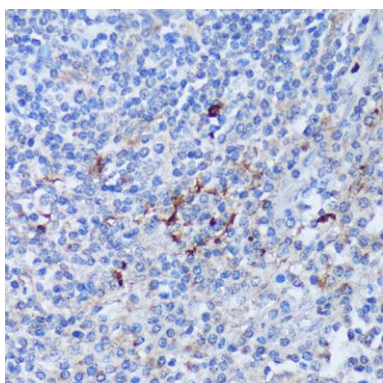
Store at -20°C. Avoid freeze / thaw cycles. Buffer: PBS with 0.02% sodium azide, 50% glycerol, pH7.3.

## Product Images

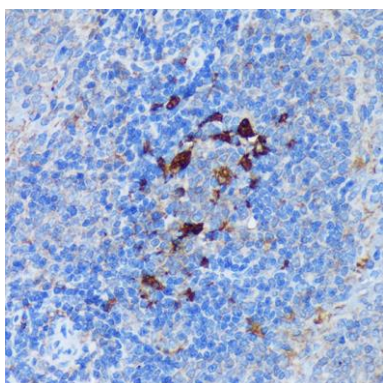
---



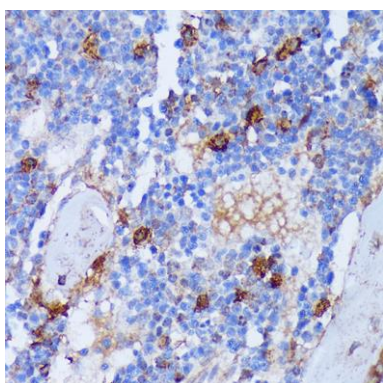
Western blot analysis of extracts of various cell lines, using PADI4 antibody (CAB16188) at 1:1000 dilution. Secondary antibody: HRP Goat Anti-Rabbit IgG (H+L) (CABS014) at 1:10000 dilution. Lysates/proteins: 25ug per lane. Blocking buffer: 3% nonfat dry milk in TBST. Detection: ECL Basic Kit (CABM00020). Exposure time: 90s.



Immunohistochemistry of paraffin-embedded Human tonsil using PADI4 antibody (CAB16188) at dilution of 1:100 (40x lens).



Immunohistochemistry of paraffin-embedded Rat spleen using PADI4 antibody (CAB16188) at dilution of 1:100 (40x lens).



Immunohistochemistry of paraffin-embedded Rat bone marrow using PADI4 antibody (CAB16188) at dilution of 1:100 (40x lens).