

RSPH10B Rabbit Polyclonal Antibody



CAB16196

Product Information

Size:

20uL, 50uL, 100uL, 200uL

Observed MW:

110kDa

Calculated MW:

100kDa

Applications:

WB

Reactivity:

Human

Antibody Information

Recommended dilutions:

WB 1:500 - 1:2000

Source:

Rabbit

Isotype:

IgG

Purification:

Affinity purification

Protein Background

Immunogen information

Gene ID:

222967

Uniprot

POC881

Synonyms:

RSPH10B

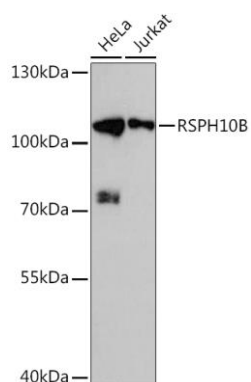
Immunogen:

Recombinant fusion protein containing a sequence corresponding to amino acids 1-300 of human RSPH10B (NP_775836.3).

Storage:

Store at -20°C. Avoid freeze / thaw cycles. Buffer: PBS with 0.02% sodium azide, 50% glycerol, pH7.3.

Product Images



Western blot analysis of extracts of various cell lines, using RSPH10B Rabbit pAb (CAB16196) at 1:3000 dilution. Secondary antibody: HRP Goat Anti-Rabbit IgG (H+L) (CABS014) at 1:10000 dilution. Lysates/proteins: 25ug per lane. Blocking buffer: 3% nonfat dry milk in TBST. Detection: ECL Basic Kit (CABM00020). Exposure time: 90s.