

KIAA1429 Rabbit Polyclonal Antibody



CAB16201

Product Information

Size:

20uL, 50uL, 100uL, 200uL

Observed MW:

208kDa

Calculated MW:

128kDa/154kDa/201kDa/202kDa

Applications:

WB IHC IF

Reactivity:

Human, Mouse, Rat

Antibody Information

Recommended dilutions:

WB 1:500 - 1:2000 IHC 1:50
- 1:100 IF 1:50 - 1:100

Source:

Rabbit

Isotype:

IgG

Purification:

Affinity purification

Protein Background

Immunogen information

Gene ID:

25962

Uniprot

Q69YN4

Synonyms:

KIAA1429; MSTP054; fSAP121; VIRMA

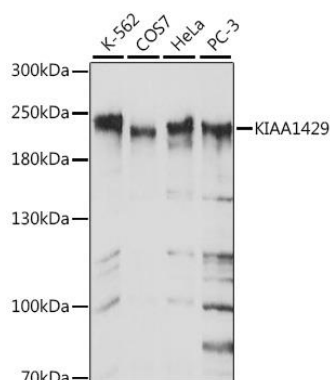
Immunogen:

Recombinant fusion protein containing a sequence corresponding to amino acids 1400-1700 of human KIAA1429 (NP_056311.2).

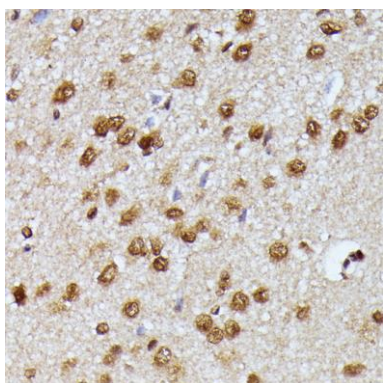
Storage:

Store at -20°C. Avoid freeze / thaw cycles. Buffer: PBS with 0.02% sodium azide, 50% glycerol, pH7.3.

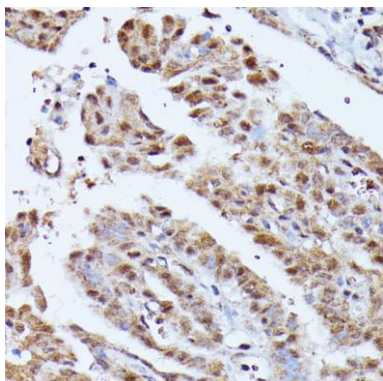
Product Images



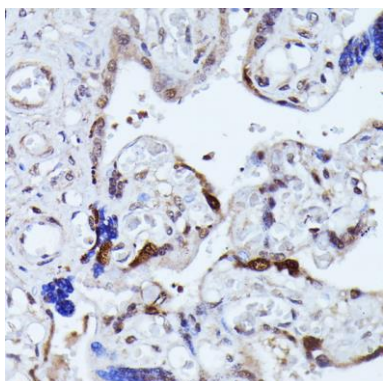
Western blot analysis of extracts of various cell lines, using KIAA1429 antibody (CAB16201) at 1:1000 dilution. Secondary antibody: HRP Goat Anti-Rabbit IgG (H+L) (CABS014) at 1:10000 dilution. Lysates/proteins: 25ug per lane. Blocking buffer: 3% nonfat dry milk in TBST. Detection: ECL Basic Kit (CABM00020). Exposure time: 1s.



Immunohistochemistry of paraffin-embedded rat brain using KIAA1429 antibody (CAB16201) at dilution of 1:100 (40x lens).



Immunohistochemistry of paraffin-embedded human thyroid cancer using KIAA1429 antibody (CAB16201) at dilution of 1:100 (40x lens).



Immunohistochemistry of paraffin-embedded human placenta using KIAA1429 antibody (CAB16201) at dilution of 1:100 (40x lens).