

SLC6A9 Rabbit Polyclonal Antibody



CAB16203

Product Information

Size:

20uL, 50uL, 100uL, 200uL

Observed MW:

78kDa

Calculated MW:

70kDa/72kDa/78kDa

Applications:

WB

Reactivity:

Human, Mouse, Rat

Protein Background

The amino acid glycine acts as an inhibitory neurotransmitter in the central nervous system. The protein encoded by this gene is one of two transporters that stop glycine signaling by removing it from the synaptic cleft.

Immunogen information

Gene ID:

6536

Uniprot

P48067

Synonyms:

SLC6A9; GCENSG; GLYT1

Antibody Information

Recommended dilutions:

WB 1:500 - 1:2000

Source:

Rabbit

Isotype:

IgG

Purification:

Affinity purification

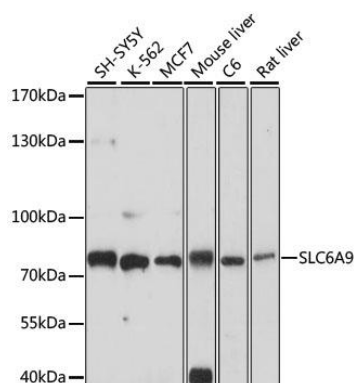
Immunogen:

Recombinant fusion protein containing a sequence corresponding to amino acids 1-110 of human SLC6A9 (NP_964012.2).

Storage:

Store at -20°C. Avoid freeze / thaw cycles. Buffer: PBS with 0.02% sodium azide, 50% glycerol, pH7.3.

Product Images



Western blot analysis of extracts of various cell lines, using SLC6A9 antibody (CAB16203) at 1:1000 dilution. Secondary antibody: HRP Goat Anti-Rabbit IgG (H+L) (CABS014) at 1:10000 dilution. Lysates/proteins: 25ug per lane. Blocking buffer: 3% nonfat dry milk in TBST. Detection: ECL Basic Kit (CABM00020). Exposure time: 10s.