

# AQP2 Rabbit Polyclonal Antibody



CAB16209

---

## Product Information

### Size:

20uL, 50uL, 100uL, 200uL

### Observed MW:

29kDa

### Calculated MW:

28kDa

### Applications:

WB IHC IF

### Reactivity:

Human, Mouse, Rat

## Protein Background

This gene encodes a water channel protein located in the kidney collecting tubule. It belongs to the MIP/aquaporin family, some members of which are clustered together on chromosome 12q13. Mutations in this gene have been linked to autosomal dominant and recessive forms of nephrogenic diabetes insipidus.

## Immunogen information

### Gene ID:

359

### Uniprot

P41181

### Synonyms:

AQP2; AQP-CD; WCH-CD

## Antibody Information

### Recommended dilutions:

WB 1:500 - 1:2000 IHC 1:50  
- 1:100 IF 1:50 - 1:200

### Source:

Rabbit

### Isotype:

IgG

### Purification:

Affinity purification

### Immunogen:

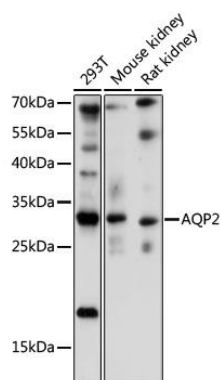
Recombinant fusion protein containing a sequence corresponding to amino acids 147-271 of human AQP2 (NP\_000477.1).

### Storage:

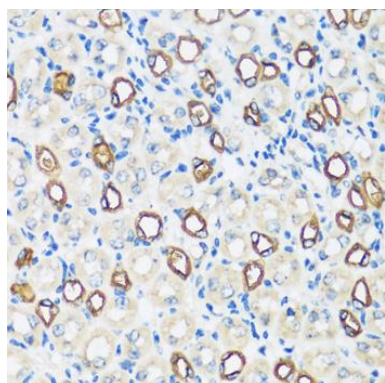
Store at -20°C. Avoid freeze / thaw cycles. Buffer: PBS with 0.02% sodium azide, 50% glycerol, pH7.3.

## Product Images

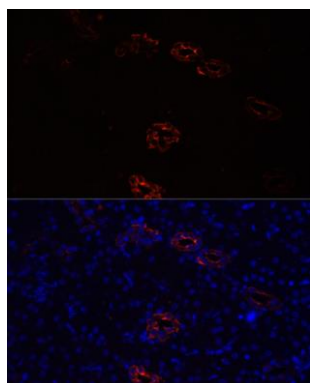
---



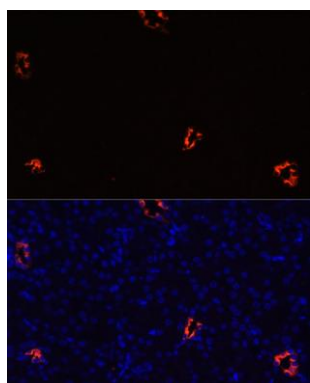
Western blot analysis of extracts of various cell lines, using AQP2 antibody (CAB16209) at 1:1000 dilution. Secondary antibody: HRP Goat Anti-Rabbit IgG (H+L) (CABS014) at 1:10000 dilution. Lysates/proteins: 25ug per lane. Blocking buffer: 3% nonfat dry milk in TBST. Detection: ECL Basic Kit (CABM00020). Exposure time: 10s.



Immunohistochemistry of paraffin-embedded mouse kidney using AQP2 antibody (CAB16209) at dilution of 1:100 (40x lens).



Immunofluorescence analysis of rat kidney cells using AQP2 antibody (CAB16209) at dilution of 1:100. Blue: DAPI for nuclear staining.



Immunofluorescence analysis of mouse kidney cells using AQP2 antibody (CAB16209) at dilution of 1:100. Blue: DAPI for nuclear staining.