

# MYOD1 Rabbit Polyclonal Antibody



CAB16218

---

## Product Information

### Size:

20uL, 50uL, 100uL, 200uL

### Observed MW:

45kDa

### Calculated MW:

34kDa

### Applications:

WB IF

### Reactivity:

Human, Mouse, Rat

## Protein Background

This gene encodes a nuclear protein that belongs to the basic helix-loop-helix family of transcription factors and the myogenic factors subfamily. It regulates muscle cell differentiation by inducing cell cycle arrest, a prerequisite for myogenic initiation. The protein is also involved in muscle regeneration. It activates its own transcription which may stabilize commitment to myogenesis.

## Immunogen information

### Gene ID:

4654

### Uniprot

P15172

### Synonyms:

MYOD1; MYF3; MYOD; PUM; bHLHc1

## Antibody Information

### Recommended dilutions:

WB 1:500 - 1:2000 IF 1:50 - 1:200

### Source:

Rabbit

### Isotype:

IgG

### Purification:

Affinity purification

### Immunogen:

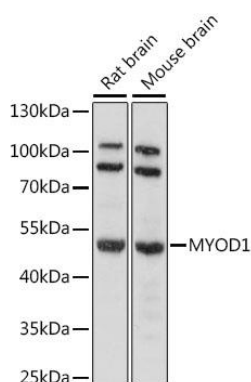
A synthetic peptide corresponding to a sequence within amino acids 150-250 of human MYOD1 (NP\_002469.2).

### Storage:

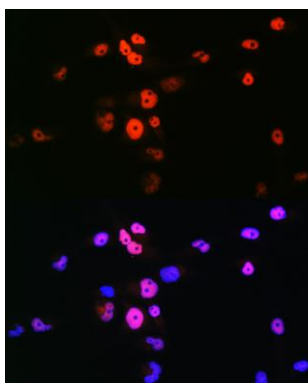
Store at -20°C. Avoid freeze / thaw cycles. Buffer: PBS with 0.02% sodium azide, 50% glycerol, pH7.3.

## Product Images

---



Western blot analysis of extracts of various cell lines, using MYOD1 antibody (CAB16218) at 1:1000 dilution. Secondary antibody: HRP Goat Anti-Rabbit IgG (H+L) (CABS014) at 1:10000 dilution. Lysates/proteins: 25ug per lane. Blocking buffer: 3% nonfat dry milk in TBST. Detection: ECL Basic Kit (CABM00020). Exposure time: 10s.



Immunofluorescence analysis of RD cells using MYOD1 Rabbit pAb (CAB16218) at dilution of 1:100 (40x lens). Blue: DAPI for nuclear staining.