

SELL Rabbit Polyclonal Antibody



CAB1622

Product Information

Size:

20uL, 50uL, 100uL, 200uL

Observed MW:

74kDa

Calculated MW:

42kDa/43kDa

Applications:

WB IHC IF

Reactivity:

Human, Mouse, Rat

Antibody Information

Recommended dilutions:

WB 1:500 - 1:2000 IHC 1:50
- 1:200 IF 1:50 - 1:200

Source:

Rabbit

Isotype:

IgG

Purification:

Affinity purification

Protein Background

This gene encodes a cell surface adhesion molecule that belongs to a family of adhesion/homing receptors. The encoded protein contains a C-type lectin-like domain, a calcium-binding epidermal growth factor-like domain, and two short complement-like repeats. The gene product is required for binding and subsequent rolling of leucocytes on endothelial cells, facilitating their migration into secondary lymphoid organs and inflammation sites. Single-nucleotide polymorphisms in this gene have been associated with various diseases including immunoglobulin A nephropathy. Alternatively spliced transcript variants have been found for this gene.

Immunogen information

Gene ID:

6402

Uniprot

P14151

Synonyms:

SELL; CD62L; LAM1; LECAM1; LEU8; LNHR; LSEL; LYAM1; PLNHR;
TQ1

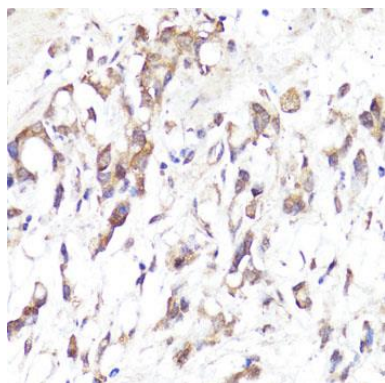
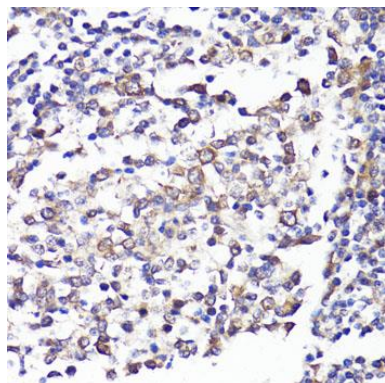
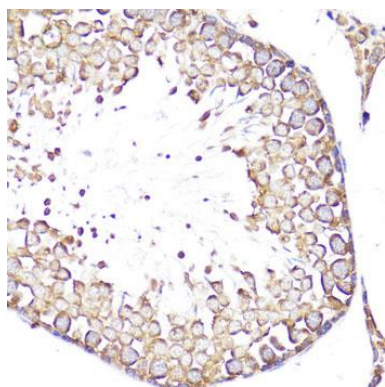
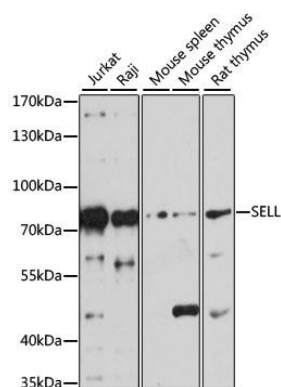
Immunogen:

A synthetic peptide corresponding to a sequence within amino acids 1-100 of human SELL (NP_000646.2).

Storage:

Store at -20°C. Avoid freeze / thaw cycles. Buffer: PBS with 0.02% sodium azide, 50% glycerol, pH7.3.

Product Images



Western blot analysis of extracts of various cell lines, using SELL antibody (CAB1622) at 1:1000 dilution. Secondary antibody: HRP Goat Anti-Rabbit IgG (H+L) (CABS014) at 1:10000 dilution. Lysates/proteins: 25ug per lane. Blocking buffer: 3% nonfat dry milk in TBST. Detection: ECL Basic Kit (CABM00020). Exposure time: 30s.

Immunohistochemistry of paraffin-embedded rat testis using SELL antibody (CAB1622) at dilution of 1:100 (40x lens).

Immunohistochemistry of paraffin-embedded human tonsil using SELL antibody (CAB1622) at dilution of 1:100 (40x lens).

Immunohistochemistry of paraffin-embedded human gastric cancer using SELL antibody (CAB1622) at dilution of 1:100 (40x lens).