

CSNK1A1 Rabbit Polyclonal Antibody



CAB16225

Product Information

Size:

20uL, 50uL, 100uL, 200uL

Observed MW:

38kDa

Calculated MW:

37kDa/38kDa/41kDa

Applications:

WB IHC IF

Reactivity:

Human, Mouse, Rat

Antibody Information

Recommended dilutions:

WB 1:500 - 1:2000 IHC 1:50
- 1:200 IF 1:50 - 1:200

Source:

Rabbit

Isotype:

IgG

Purification:

Affinity purification

Protein Background

Immunogen information

Gene ID:

1452

Uniprot

P48729

Synonyms:

CSNK1A1; CK1; CK1a; CKIa; HEL-S-77p; HLCDGP1; PRO2975

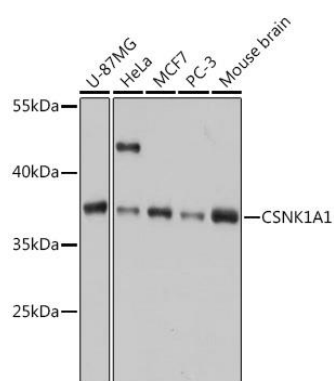
Immunogen:

A synthetic peptide corresponding to a sequence within amino acids 100-200 of human CSNK1A1 (NP_001020276.1).

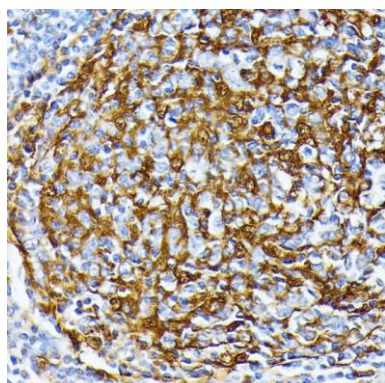
Storage:

Store at -20°C. Avoid freeze / thaw cycles. Buffer: PBS with 0.02% sodium azide, 50% glycerol, pH7.3.

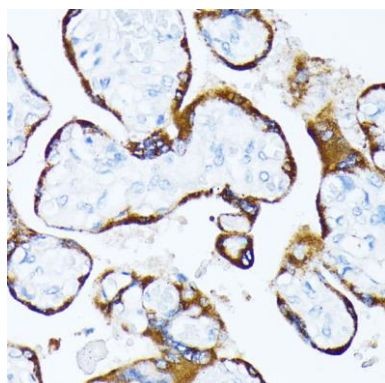
Product Images



Western blot analysis of extracts of various cell lines, using CSNK1A1 antibody (CAB16225) at 1:1000 dilution. Secondary antibody: HRP Goat Anti-Rabbit IgG (H+L) (CABS014) at 1:10000 dilution. Lysates/proteins: 25ug per lane. Blocking buffer: 3% nonfat dry milk in TBST. Detection: ECL Basic Kit (CABM00020). Exposure time: 1s.



Immunohistochemistry of paraffin-embedded human tonsil using CSNK1A1 antibody (CAB16225) at dilution of 1:100 (40x lens).



Immunohistochemistry of paraffin-embedded human placenta using CSNK1A1 antibody (CAB16225) at dilution of 1:100 (40x lens).