

TGFB2 Rabbit Polyclonal Antibody



CAB16226

Product Information

Size:

20uL, 50uL, 100uL, 200uL

Observed MW:

Refer to figures

Calculated MW:

47kDa/50kDa

Applications:

WB IHC

Reactivity:

Human

Antibody Information

Recommended dilutions:

WB 1:500 - 1:2000 IHC 1:50
- 1:200

Source:

Rabbit

Isotype:

IgG

Purification:

Affinity purification

Protein Background

This gene encodes a member of the transforming growth factor beta (TGFB) family of cytokines, which are multifunctional peptides that regulate proliferation, differentiation, adhesion, migration, and other functions in many cell types by transducing their signal through combinations of transmembrane type I and type II receptors (TGFR1 and TGFR2) and their downstream effectors, the SMAD proteins. Disruption of the TGFB/SMAD pathway has been implicated in a variety of human cancers. The encoded protein is secreted and has suppressive effects of interleukin-2 dependent T-cell growth. Translocation t(1;7)(q41;p21) between this gene and HDAC9 is associated with Peters' anomaly, a congenital defect of the anterior chamber of the eye. The knockout mice lacking this gene show perinatal mortality and a wide range of developmental, including cardiac, defects. Alternatively spliced transcript variants encoding different isoforms have been identified.

Immunogen information

Gene ID:

7042

Uniprot

P61812

Synonyms:

TGFB2; G-TSF; LDS4; TGF-beta2

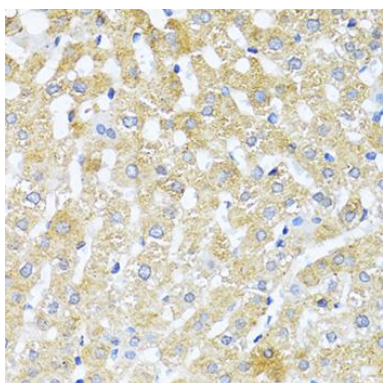
Immunogen:

Recombinant fusion protein containing a sequence corresponding to amino acids 20-160 of human TGFB2 (NP_001129071.1).

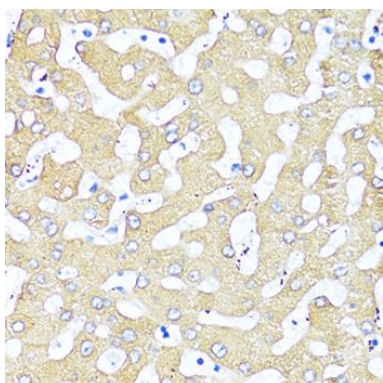
Storage:

Store at -20°C. Avoid freeze / thaw cycles. Buffer: PBS with 0.02% sodium azide, 50% glycerol, pH7.3.

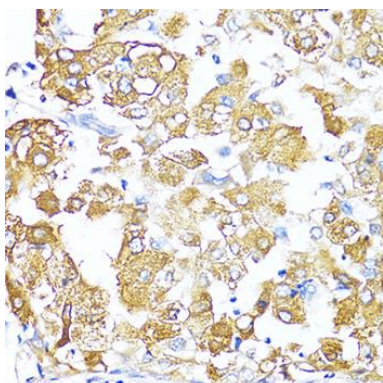
Product Images



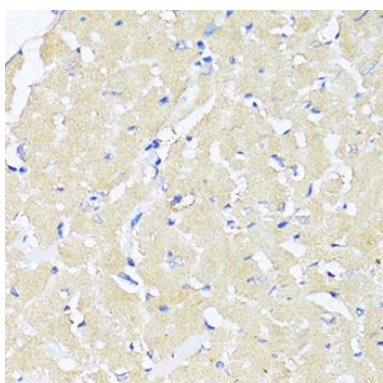
Immunohistochemistry of paraffin-embedded rat liver using TGFB2 antibody (CAB16226) at dilution of 1:100 (40x lens).



Immunohistochemistry of paraffin-embedded human liver using TGFB2 antibody (CAB16226) at dilution of 1:100 (40x lens).



Immunohistochemistry of paraffin-embedded human liver cancer using TGFB2 antibody (CAB16226) at dilution of 1:100 (40x lens).



Immunohistochemistry of paraffin-embedded mouse heart using TGFB2 antibody (CAB16226) at dilution of 1:100 (40x lens).