

NTN1 Rabbit Polyclonal Antibody



CAB16236

Product Information

Size:

20uL, 50uL, 100uL, 200uL

Observed MW:

68kDa

Calculated MW:

67kDa

Applications:

WB

Reactivity:

Mouse, Rat

Protein Background

Netrin is included in a family of laminin-related secreted proteins. The function of this gene has not yet been defined; however, netrin is thought to be involved in axon guidance and cell migration during development. Mutations and loss of expression of netrin suggest that variation in netrin may be involved in cancer development.

Immunogen information

Gene ID:

9423

Uniprot

O95631

Synonyms:

NTN1; NTN1L; netrin-1

Antibody Information

Recommended dilutions:

WB 1:500 - 1:2000

Source:

Rabbit

Isotype:

IgG

Purification:

Affinity purification

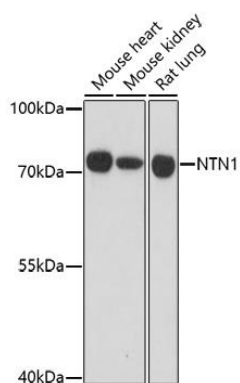
Immunogen:

A synthetic peptide corresponding to a sequence within amino acids 500-600 of human NTN1 (NP_004813.2).

Storage:

Store at -20°C. Avoid freeze / thaw cycles. Buffer: PBS with 0.02% sodium azide, 50% glycerol, pH7.3.

Product Images



Western blot analysis of extracts of various cell lines, using NTN1 antibody (CAB16236) at 1:1000 dilution. Secondary antibody: HRP Goat Anti-Rabbit IgG (H+L) (CABS014) at 1:10000 dilution. Lysates/proteins: 25ug per lane. Blocking buffer: 3% nonfat dry milk in TBST. Detection: ECL Basic Kit (CABM00020). Exposure time: 3min.