

NDUFA11 Rabbit Polyclonal Antibody



CAB16239

Product Information

Size:

20uL, 50uL, 100uL, 200uL

Observed MW:

15kDa

Calculated MW:

15kDa

Applications:

WB

Reactivity:

Mouse

Protein Background

This gene encodes a subunit of the membrane-bound mitochondrial complex I. Complex I is composed of numerous subunits and functions as the NADH-ubiquinol reductase of the mitochondrial electron transport chain. Mutations in this gene are associated with severe mitochondrial complex I deficiency. Alternate splicing results in multiple transcript variants.

Immunogen information

Gene ID:

126328

Uniprot

Q86Y39

Synonyms:

NDUFA11; B14.7; CI-B14.7

Antibody Information

Recommended dilutions:

WB 1:500 - 1:2000

Source:

Rabbit

Isotype:

IgG

Purification:

Affinity purification

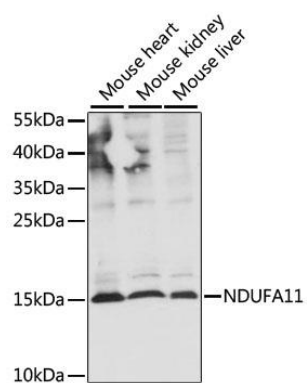
Immunogen:

A synthetic peptide corresponding to a sequence within amino acids 1-100 of human NDUFA11 (NP_783313.1).

Storage:

Store at -20°C. Avoid freeze / thaw cycles. Buffer: PBS with 0.02% sodium azide, 50% glycerol, pH7.3.

Product Images



Western blot analysis of extracts of various cell lines, using NDUFA11 antibody (CAB16239) at 1:1000 dilution. Secondary antibody: HRP Goat Anti-Rabbit IgG (H+L) (CABS014) at 1:10000 dilution. Lysates/proteins: 25ug per lane. Blocking buffer: 3% nonfat dry milk in TBST. Detection: ECL Basic Kit (CABM00020). Exposure time: 5s.