

# TFPI Rabbit Polyclonal Antibody



CAB1624

## Product Information

### Size:

20uL, 50uL, 100uL, 200uL

### Observed MW:

31kDa

### Calculated MW:

28kDa/35kDa

### Applications:

WB IF

### Reactivity:

Human, Mouse, Rat

## Antibody Information

### Recommended dilutions:

WB 1:500 - 1:2000 IF 1:50 - 1:200

### Source:

Rabbit

### Isotype:

IgG

### Purification:

Affinity purification

## Protein Background

This gene encodes a protease inhibitor that regulates the tissue factor (TF)-dependent pathway of blood coagulation. The coagulation process initiates with the formation of a factor VIIa-TF complex, which proteolytically activates additional proteases (factors IX and X) and ultimately leads to the formation of a fibrin clot. The product of this gene inhibits the activated factor X and VIIa-TF proteases in an autoregulatory loop. The encoded protein is glycosylated and predominantly found in the vascular endothelium and plasma in both free forms and complexed with plasma lipoproteins. Several alternatively spliced transcript variants of this gene have been described, but the full-length nature of some of these variants has not been confirmed.

## Immunogen information

### Gene ID:

7035

### Uniprot

P10646

### Synonyms:

TFPI; EPI; LACI; TFI; TFPI1

### Immunogen:

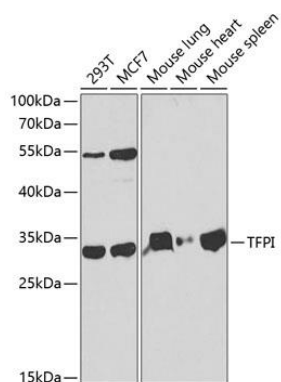
Recombinant fusion protein containing a sequence corresponding to amino acids 29-224 of human TFPI (NP\_001027452.1).

### Storage:

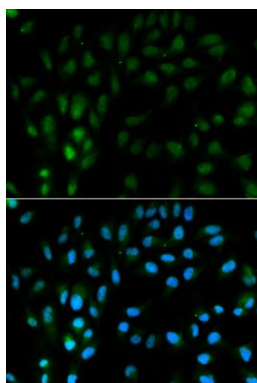
Store at -20°C. Avoid freeze / thaw cycles. Buffer: PBS with 0.02% sodium azide, 50% glycerol, pH7.3.

## Product Images

---



Western blot analysis of extracts of various cell lines, using TFPI antibody (CAB1624) at 1:1000 dilution. Secondary antibody: HRP Goat Anti-Rabbit IgG (H+L) (CABS014) at 1:10000 dilution. Lysates/proteins: 25ug per lane. Blocking buffer: 3% nonfat dry milk in TBST.



Immunofluorescence analysis of MCF-7 cells using TFPI antibody (CAB1624). Blue: DAPI for nuclear staining.