

SDHD Rabbit Polyclonal Antibody



CAB16240

Product Information

Size:

20uL, 50uL, 100uL, 200uL

Observed MW:

17kDa

Calculated MW:

9kDa/12kDa/15kDa/17kDa

Applications:

WB

Reactivity:

Human, Mouse, Rat

Protein Background

This gene encodes a member of complex II of the respiratory chain, which is responsible for the oxidation of succinate. The encoded protein is one of two integral membrane proteins anchoring the complex to the matrix side of the mitochondrial inner membrane. Mutations in this gene are associated with the formation of tumors, including hereditary paraganglioma. Transmission of disease occurs almost exclusively through the paternal allele, suggesting that this locus may be maternally imprinted. There are pseudogenes for this gene on chromosomes 1, 2, 3, 7, and 18. Alternative splicing results in multiple transcript variants.

Immunogen information

Gene ID:

6392

Uniprot

O14521

Synonyms:

SDHD; CBT1; CII-4; CWS3; PGL; PGL1; QPs3; SDH4; cybS

Antibody Information

Recommended dilutions:

WB 1:500 - 1:2000

Source:

Rabbit

Isotype:

IgG

Purification:

Affinity purification

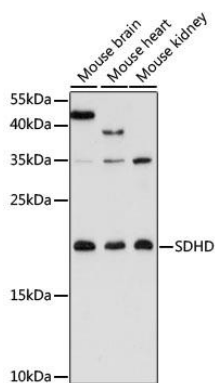
Immunogen:

A synthetic peptide corresponding to a sequence within amino acids 50-150 of human SDHD (NP_002993.1).

Storage:

Store at -20°C. Avoid freeze / thaw cycles. Buffer: PBS with 0.02% sodium azide, 50% glycerol, pH7.3.

Product Images



Western blot analysis of extracts of various cell lines, using SDHD antibody (CAB16240) at 1:3000 dilution. Secondary antibody: HRP Goat Anti-Rabbit IgG (H+L) (CABS014) at 1:10000 dilution. Lysates/proteins: 25ug per lane. Blocking buffer: 3% nonfat dry milk in TBST. Detection: ECL Basic Kit (CABM00020). Exposure time: 10s.