

KITLG Rabbit Polyclonal Antibody



CAB16245

Product Information

Size:

20uL, 50uL, 100uL, 200uL

Observed MW:

31kDa

Calculated MW:

26kDa/27kDa/30kDa

Applications:

WB IF

Reactivity:

Human, Mouse

Antibody Information

Recommended dilutions:

WB 1:500 - 1:2000 IF 1:50 - 1:200

Source:

Rabbit

Isotype:

IgG

Purification:

Affinity purification

Protein Background

This gene encodes the ligand of the tyrosine-kinase receptor encoded by the KIT locus. This ligand is a pleiotropic factor that acts in utero in germ cell and neural cell development, and hematopoiesis, all believed to reflect a role in cell migration. In adults, it functions pleiotropically, while mostly noted for its continued requirement in hematopoiesis. Two transcript variants encoding different isoforms have been found for this gene.

Immunogen information

Gene ID:

4254

Uniprot

P21583

Synonyms:

KITLG; DCUA; DFNA69; FPH2; FPHH; KL-1; Kitl; MGF; SCF; SF; SHEP7

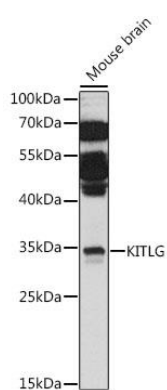
Immunogen:

Recombinant fusion protein containing a sequence corresponding to amino acids 26-214 of human KITLG (NP_000890.1).

Storage:

Store at -20°C. Avoid freeze / thaw cycles. Buffer: PBS with 0.02% sodium azide, 50% glycerol, pH7.3.

Product Images



Western blot analysis of extracts of mouse brain, using KITLG antibody (CAB16245) at 1:1000 dilution. Secondary antibody: HRP Goat Anti-Rabbit IgG (H+L) (CABS014) at 1:10000 dilution. Lysates/proteins: 25ug per lane. Blocking buffer: 3% nonfat dry milk in TBST. Detection: ECL Basic Kit (CABM00020). Exposure time: 60s.