

# SMN1 Rabbit Polyclonal Antibody



CAB16246

## Product Information

### Size:

20uL, 50uL, 100uL, 200uL

### Observed MW:

32kDa

### Calculated MW:

27kDa/28kDa/30kDa/31kDa

### Applications:

WB IHC

### Reactivity:

Human, Mouse, Rat

## Protein Background

This gene is part of a 500 kb inverted duplication on chromosome 5q13. This duplicated region contains at least four genes and repetitive elements which make it prone to rearrangements and deletions. The repetitiveness and complexity of the sequence have also caused difficulty in determining the organization of this genomic region. The telomeric and centromeric copies of this gene are nearly identical and encode the same protein. However, mutations in this gene, the telomeric copy, are associated with spinal muscular atrophy; mutations in the centromeric copy do not lead to disease. The centromeric copy may be a modifier of disease caused by mutation in the telomeric copy. The critical sequence difference between the two genes is a single nucleotide in exon 7, which is thought to be an exon splice enhancer. Note that the nine exons of both the telomeric and centromeric copies are designated historically as exon 1, 2a, 2b, and 3-8. It is thought that gene conversion events may involve the two genes, leading to varying copy numbers of each gene. The protein encoded by this gene localizes to both the cytoplasm and the nucleus. Within the nucleus, the protein localizes to subnuclear bodies called gems which are found near coiled bodies containing high concentrations of small ribonucleoproteins (snRNPs). This protein forms heteromeric complexes with proteins such as SIP1 and GEMIN4, and also interacts with several proteins known to be involved in the biogenesis of snRNPs, such as hnRNP U protein and the small nucleolar RNA binding protein. Multiple transcript variants encoding distinct isoforms have been described.

## Antibody Information

### Recommended dilutions:

WB 1:500 - 1:2000 IHC 1:50 - 1:200

### Source:

Rabbit

### Isotype:

IgG

### Purification:

Affinity purification

## Immunogen information

### Gene ID:

6606

### Uniprot

Q16637

### Synonyms:

SMN1; BCD541; GEMIN1; SMA; SMA1; SMA2; SMA3; SMA4

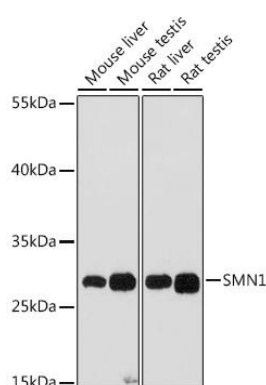
### Immunogen:

Recombinant fusion protein containing a sequence corresponding to amino acids 80-150 of human SMN1 (NP\_000335.1).

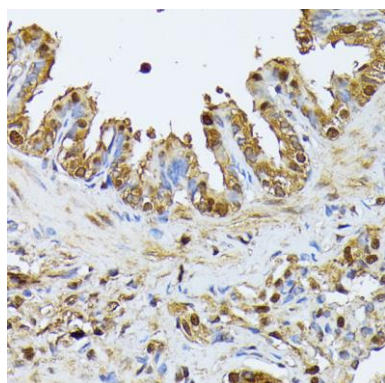
### Storage:

Store at -20°C. Avoid freeze / thaw cycles. Buffer: PBS with 0.02% sodium azide, 50% glycerol, pH7.3.

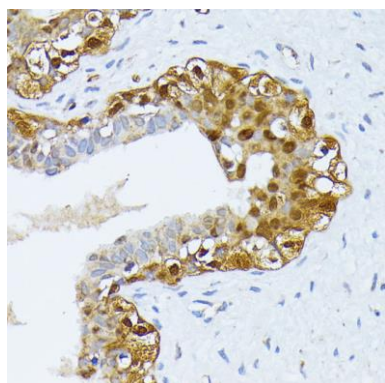
## Product Images



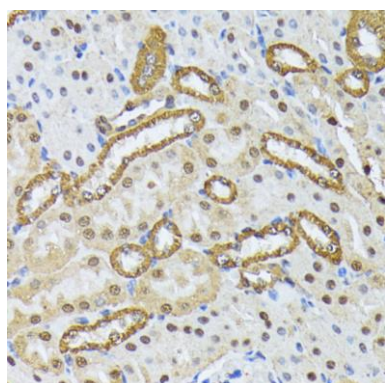
Western blot analysis of extracts of various cell lines, using SMN1 antibody (CAB16246) at 1:1000 dilution. Secondary antibody: HRP Goat Anti-Rabbit IgG (H+L) (CABS014) at 1:10000 dilution. Lysates/proteins: 25ug per lane. Blocking buffer: 3% nonfat dry milk in TBST. Detection: ECL Basic Kit (CABM00020). Exposure time: 90s.



Immunohistochemistry of paraffin-embedded rat lung using SMN1 antibody (CAB16246) at dilution of 1:100 (40x lens).



Immunohistochemistry of paraffin-embedded human breast using SMN1 antibody (CAB16246) at dilution of 1:100 (40x lens).



Immunohistochemistry of paraffin-embedded mouse kidney using SMN1 antibody (CAB16246) at dilution of 1:100 (40x lens).