

RFC1 Rabbit Polyclonal Antibody



CAB1625

Product Information

Size:

20uL, 50uL, 100uL, 200uL

Observed MW:

130kDa

Calculated MW:

128kDa

Applications:

WB IF

Reactivity:

Human

Protein Background

This gene encodes the large subunit of replication factor C, a five subunit DNA polymerase accessory protein, which is a DNA-dependent ATPase required for eukaryotic DNA replication and repair. The large subunit acts as an activator of DNA polymerases, binds to the 3' end of primers, and promotes coordinated synthesis of both strands. It may also have a role in telomere stability. Alternatively spliced transcript variants encoding different isoforms have been noted for this gene.

Immunogen information

Gene ID:

5981

Uniprot

P35251

Synonyms:

RFC1; A1; MHCBFB; PO-GA; RECC1; RFC; RFC140

Antibody Information

Recommended dilutions:

WB 1:500 - 1:2000 IF 1:50 - 1:200

Source:

Rabbit

Isotype:

IgG

Purification:

Affinity purification

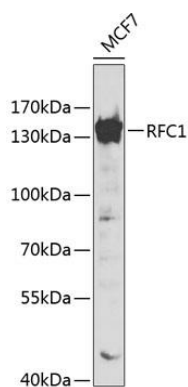
Immunogen:

Recombinant fusion protein containing a sequence corresponding to amino acids 400-700 of human RFC1 (NP_001191676.1).

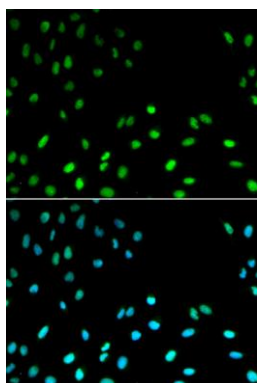
Storage:

Store at -20°C. Avoid freeze / thaw cycles. Buffer: PBS with 0.02% sodium azide, 50% glycerol, pH7.3.

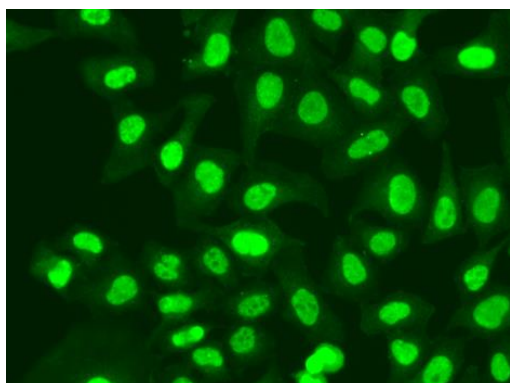
Product Images



Western blot analysis of extracts of MCF-7 cells, using RFC1 antibody (CAB1625) at 1:500 dilution. Secondary antibody: HRP Goat Anti-Rabbit IgG (H+L) (CABS014) at 1:10000 dilution. Lysates/proteins: 25ug per lane. Blocking buffer: 3% nonfat dry milk in TBST.



Immunofluorescence analysis of MCF-7 cells using RFC1 antibody (CAB1625). Blue: DAPI for nuclear staining.



Immunofluorescence analysis of A549 cells using RFC1 antibody (CAB1625).