

DDX6 Rabbit Polyclonal Antibody



CAB16270

Product Information

Size:

20uL, 50uL, 100uL, 200uL

Observed MW:

54kDa

Calculated MW:

54kDa

Applications:

WB IHC IF

Reactivity:

Human, Mouse, Rat

Protein Background

This gene encodes a member of the DEAD box protein family. The protein is an RNA helicase found in P-bodies and stress granules, and functions in translation suppression and mRNA degradation. It is required for microRNA-induced gene silencing. Multiple alternatively spliced variants, encoding the same protein, have been identified.

Immunogen information

Gene ID:

1656

Uniprot

P26196

Synonyms:

DDX6; HLR2; P54; RCK

Antibody Information

Recommended dilutions:

WB 1:500 - 1:2000 IHC 1:50
- 1:100 IF 1:50 - 1:100

Source:

Rabbit

Isotype:

IgG

Purification:

Affinity purification

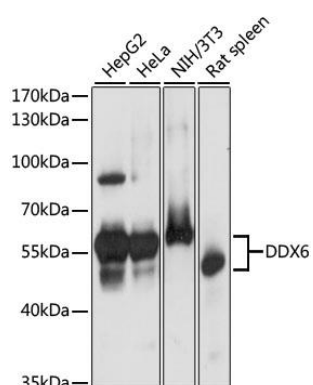
Immunogen:

A synthetic peptide corresponding to a sequence within amino acids 400 to the C-terminus of human DDX6 (NP_001244120.1).

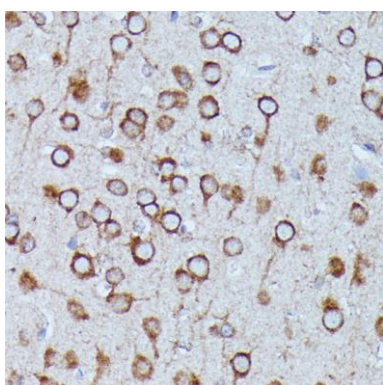
Storage:

Store at -20°C. Avoid freeze / thaw cycles. Buffer: PBS with 0.02% sodium azide, 50% glycerol, pH7.3.

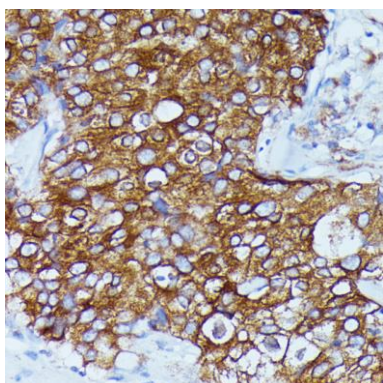
Product Images



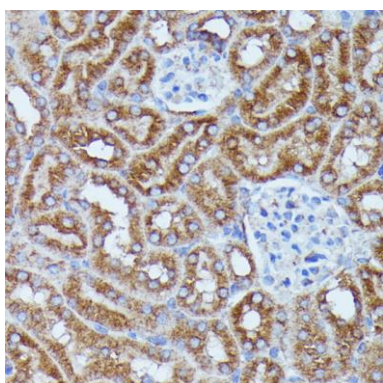
Western blot analysis of extracts of various cell lines, using DDX6 antibody (CAB16270) at 1:1000 dilution. Secondary antibody: HRP Goat Anti-Rabbit IgG (H+L) (CABS014) at 1:10000 dilution. Lysates/proteins: 25ug per lane. Blocking buffer: 3% nonfat dry milk in TBST. Detection: ECL Basic Kit (CABM00020). Exposure time: 1s.



Immunohistochemistry of paraffin-embedded rat brain using DDX6 antibody (CAB16270) at dilution of 1:100 (40x lens).



Immunohistochemistry of paraffin-embedded human mammary cancer using DDX6 antibody (CAB16270) at dilution of 1:100 (40x lens).



Immunohistochemistry of paraffin-embedded mouse kidney using DDX6 antibody (CAB16270) at dilution of 1:100 (40x lens).