

TET2 Rabbit Polyclonal Antibody



CAB16273

Product Information

Size:

50uL, 100uL

Observed MW:

223kDa

Calculated MW:

130kDa/133kDa/223kDa

Applications:

WB IHC IF IP

Reactivity:

Human, Mouse

Protein Background

The protein encoded by this gene is a methylcytosine dioxygenase that catalyzes the conversion of methylcytosine to 5-hydroxymethylcytosine. The encoded protein is involved in myelopoiesis, and defects in this gene have been associated with several myeloproliferative disorders. Two variants encoding different isoforms have been found for this gene.

Immunogen information

Gene ID:

54790

Uniprot

Q6N021

Synonyms:

MDS; KIAA1546; TET2

Antibody Information

Recommended dilutions:

WB 1:500 - 1:1000 IHC 1:50
- 1:200 IF 1:50 - 1:200 IP
1:50 - 1:100

Source:

Rabbit

Isotype:

IgG

Purification:

Affinity purification

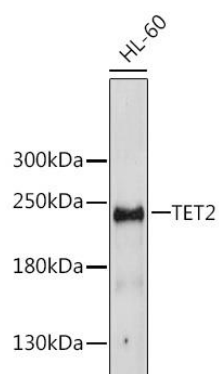
Immunogen:

A synthetic peptide of human TET2

Storage:

Store at -20°C. Avoid freeze / thaw cycles. Buffer: PBS with 0.02% sodium azide, 50% glycerol, pH7.3.

Product Images



Western blot analysis of extracts of HL-60 cells, using TET2 antibody (CAB16273). Secondary antibody: HRP Goat Anti-Rabbit IgG (H+L) (CABS014) at 1:10000 dilution. Lysates/proteins: 25ug per lane. Blocking buffer: 3% nonfat dry milk in TBST.