

KRT1 Rabbit Polyclonal Antibody



CAB16275

Product Information

Size:

20uL, 50uL, 100uL, 200uL

Observed MW:

Calculated MW:

66kDa

Applications:

IHC IF

Reactivity:

Human, Mouse

Antibody Information

Recommended dilutions:

IHC 1:50 - 1:200 IF 1:50 - 1:200

Source:

Rabbit

Isotype:

IgG

Purification:

Affinity purification

Protein Background

The protein encoded by this gene is a member of the keratin gene family. The type II cytokeratins consist of basic or neutral proteins which are arranged in pairs of heterotypic keratin chains coexpressed during differentiation of simple and stratified epithelial tissues. This type II cytokeratin is specifically expressed in the spinous and granular layers of the epidermis with family member KRT10 and mutations in these genes have been associated with bullous congenital ichthyosiform erythroderma. The type II cytokeratins are clustered in a region of chromosome 12q12-q13.

Immunogen information

Gene ID:

3848

Uniprot

P04264

Synonyms:

KRT1; CK1; EHK; EHK1; EPPK; K1; KRT1A; NEPPK; keratin 1

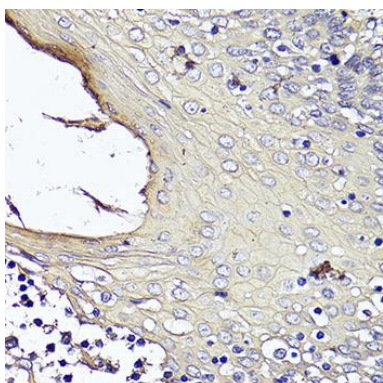
Immunogen:

Recombinant fusion protein containing a sequence corresponding to amino acids 200-450 of human KRT1 (NP_006112.3).

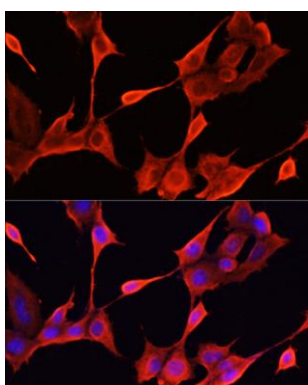
Storage:

Store at -20°C. Avoid freeze / thaw cycles. Buffer: PBS with 0.02% sodium azide, 50% glycerol, pH7.3.

Product Images



Immunohistochemistry of paraffin-embedded human tonsil using KRT1 antibody (CAB16275) at dilution of 1:100 (40x lens).



Immunofluorescence analysis of NIH/3T3 cells using KRT1 antibody (CAB16275) at dilution of 1:100. Blue: DAPI for nuclear staining.