

DPPA5 Rabbit Polyclonal Antibody



CAB16280

Product Information

Size:

20uL, 50uL, 100uL, 200uL

Observed MW:

13kDa

Calculated MW:

13kDa

Applications:

WB

Reactivity:

Mouse, Rat

Protein Background

This gene encodes a protein that may function in the control of cell pluripotency and early embryogenesis. Expression of this gene is a specific marker for pluripotent stem cells. Pseudogenes of this gene are located on the short arm of chromosome 10 and the long arm of chromosomes 14 and 19.

Immunogen information

Gene ID:

340168

Uniprot

A6NC42

Synonyms:

DPPA5; ESG1

Antibody Information

Recommended dilutions:

WB 1:500 - 1:2000

Source:

Rabbit

Isotype:

IgG

Purification:

Affinity purification

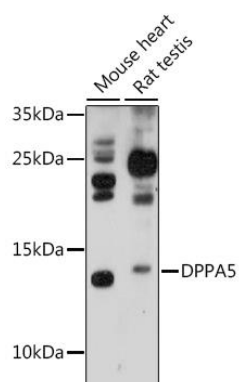
Immunogen:

Recombinant fusion protein containing a sequence corresponding to amino acids 1-116 of human DPPA5 (NP_001020461.1).

Storage:

Store at -20°C. Avoid freeze / thaw cycles. Buffer: PBS with 0.02% sodium azide, 50% glycerol, pH7.3.

Product Images



Western blot analysis of extracts of various cell lines, using DPPA5 antibody (CAB16280) at 1:1000 dilution. Secondary antibody: HRP Goat Anti-Rabbit IgG (H+L) (CABS014) at 1:10000 dilution. Lysates/proteins: 25ug per lane. Blocking buffer: 3% nonfat dry milk in TBST. Detection: ECL Basic Kit (CABM00020). Exposure time: 3min.