

# MCU Rabbit Polyclonal Antibody



CAB16281

---

## Product Information

### Size:

20uL, 50uL, 100uL, 200uL

### Observed MW:

26KDa

### Calculated MW:

35kDa/36kDa/39kDa

### Applications:

WB IF

### Reactivity:

Human, Mouse, Rat

## Protein Background

This gene encodes a calcium transporter that localizes to the mitochondrial inner membrane. The encoded protein interacts with mitochondrial calcium uptake 1. Alternative splicing results in multiple transcript variants.

## Immunogen information

### Gene ID:

90550

### Uniprot

Q8NE86

### Synonyms:

MCU; C10orf42; CCDC109A; HsMCU

## Antibody Information

### Recommended dilutions:

WB 1:500 - 1:2000 IF 1:50 - 1:200

### Source:

Rabbit

### Isotype:

IgG

### Purification:

Affinity purification

### Immunogen:

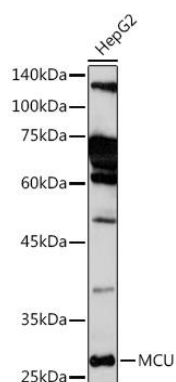
Recombinant fusion protein containing a sequence corresponding to amino acids 1-351 of human MCU (NP\_612366.1).

### Storage:

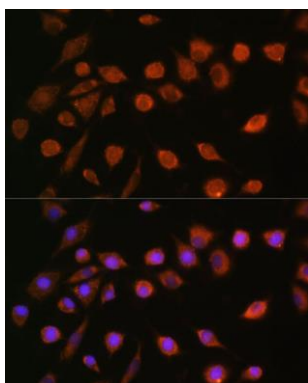
Store at -20°C. Avoid freeze / thaw cycles. Buffer: PBS with 0.02% sodium azide, 50% glycerol, pH7.3.

## Product Images

---



Western blot analysis of extracts of HepG2 cells, using MCU Rabbit pAb (CAB16281) at 1:1000 dilution. Secondary antibody: HRP Goat Anti-Rabbit IgG (H+L) (CABS014) at 1:10000 dilution. Lysates/proteins: 25ug per lane. Blocking buffer: 3% nonfat dry milk in TBST. Detection: ECL Basic Kit (CABM00020). Exposure time: 180s.



Immunofluorescence analysis of L929 cells using MCU antibody (CAB16281) at dilution of 1:100. Blue: DAPI for nuclear staining.