

# FOXQ1 Rabbit Polyclonal Antibody



CAB16282

---

## Product Information

**Size:**

20uL, 50uL, 100uL, 200uL

**Observed MW:**

41kDa

**Calculated MW:**

41kDa

**Applications:**

WB

**Reactivity:**

Rat

## Protein Background

FOXQ1 is a member of the FOX gene family, which is characterized by a conserved 110-amino acid DNA-binding motif called the forkhead or winged helix domain. FOX genes are involved in embryonic development, cell cycle regulation, tissue-specific gene expression, cell signaling, and tumorigenesis.

## Immunogen information

**Gene ID:**

94234

**Uniprot**

Q9C009

**Synonyms:**

FOXQ1; HFH1

## Antibody Information

**Recommended dilutions:**

WB 1:500 - 1:2000

**Source:**

Rabbit

**Isotype:**

IgG

**Purification:**

Affinity purification

**Immunogen:**

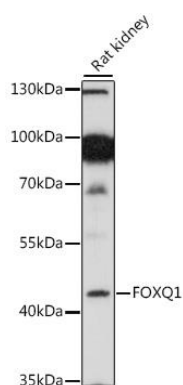
A synthetic peptide of human FOXQ1

**Storage:**

Store at -20°C. Avoid freeze / thaw cycles. Buffer: PBS with 0.02% sodium azide, 50% glycerol, pH7.3.

## Product Images

---



Western blot analysis of extracts of rat kidney, using FOXQ1 antibody (CAB16282) at 1:1000 dilution. Secondary antibody: HRP Goat Anti-Rabbit IgG (H+L) (CABS014) at 1:10000 dilution. Lysates/proteins: 25ug per lane. Blocking buffer: 3% nonfat dry milk in TBST. Detection: ECL Basic Kit (CABM00020). Exposure time: 3min.