

# CDX2 Rabbit Polyclonal Antibody



**CAB1629**

---

## Product Information

### Size:

20uL, 50uL, 100uL, 200uL

### Observed MW:

36kDa

### Calculated MW:

33kDa

### Applications:

WB IHC IF

### Reactivity:

Human

## Protein Background

This gene is a member of the caudal-related homeobox transcription factor gene family. The encoded protein is a major regulator of intestine-specific genes involved in cell growth and differentiation. This protein also plays a role in early embryonic development of the intestinal tract. Aberrant expression of this gene is associated with intestinal inflammation and tumorigenesis.

## Immunogen information

### Gene ID:

1045

### Uniprot

Q99626

### Synonyms:

CDX2; CDX-3; CDX2/AS; CDX3

## Antibody Information

### Recommended dilutions:

WB 1:500 - 1:2000 IHC 1:50  
- 1:200 IF 1:50 - 1:200

### Source:

Rabbit

### Isotype:

IgG

### Purification:

Affinity purification

### Immunogen:

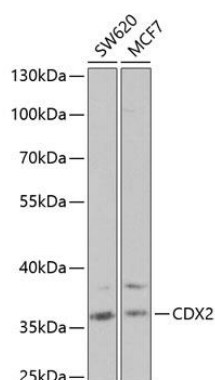
Recombinant fusion protein containing a sequence corresponding to amino acids 1-180 of human CDX2 (NP\_001256.3).

### Storage:

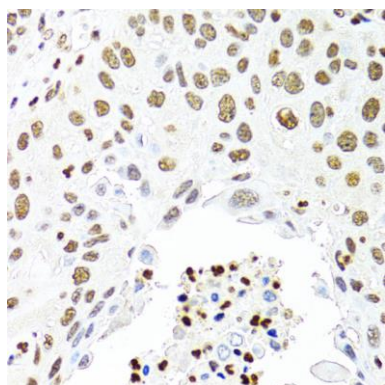
Store at -20°C. Avoid freeze / thaw cycles. Buffer: PBS with 0.02% sodium azide, 50% glycerol, pH7.3.

## Product Images

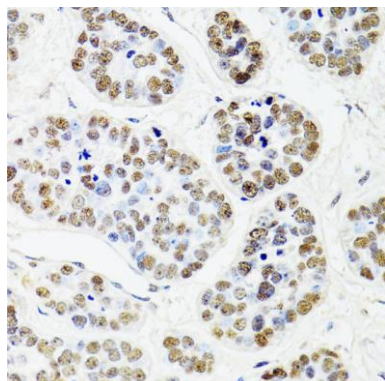
---



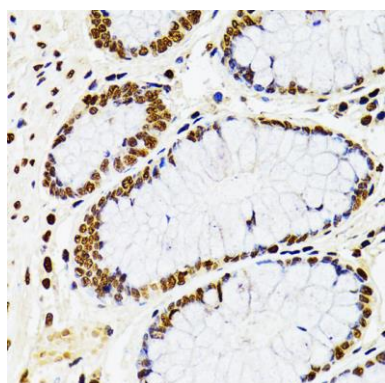
Western blot analysis of extracts of various cell lines, using CDX2 antibody (CAB1629) at 1:1000 dilution. Secondary antibody: HRP Goat Anti-Rabbit IgG (H+L) (CABS014) at 1:10000 dilution. Lysates/proteins: 25ug per lane. Blocking buffer: 3% nonfat dry milk in TBST.



Immunohistochemistry of paraffin-embedded human lung cancer using CDX2 antibody (CAB1629) at dilution of 1:100 (40x lens).



Immunohistochemistry of paraffin-embedded human esophageal cancer using CDX2 antibody (CAB1629) at dilution of 1:100 (40x lens).



Immunohistochemistry of paraffin-embedded human rectum using CDX2 antibody (CAB1629) at dilution of 1:100 (40x lens).