

STXBP5 Rabbit Polyclonal Antibody



CAB16311

Product Information

Size:

20uL, 50uL, 100uL, 200uL

Observed MW:

135kDa

Calculated MW:

121kDa/123kDa/127kDa

Applications:

WB

Reactivity:

Human

Protein Background

Syntaxin 1 is a component of the 7S and 20S SNARE complexes which are involved in docking and fusion of synaptic vesicles with the presynaptic plasma membrane. This gene encodes a syntaxin 1 binding protein. In rat, a similar protein dissociates syntaxin 1 from the Munc18/n-Sec1/rbSec1 complex to form a 10S complex, an intermediate which can be converted to the 7S SNARE complex. Thus this protein is thought to be involved in neurotransmitter release by stimulating SNARE complex formation. Alternatively spliced transcript variants encoding different isoforms have been identified.

Immunogen information

Gene ID:

134957

Uniprot

Q5T5C0

Synonyms:

STXBP5; LGL3; LLGL3; Nbla04300

Antibody Information

Recommended dilutions:

WB 1:500 - 1:2000

Source:

Rabbit

Isotype:

IgG

Purification:

Affinity purification

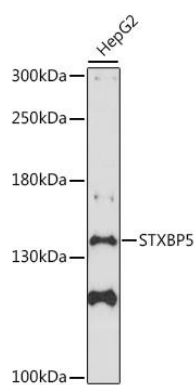
Immunogen:

Recombinant fusion protein containing a sequence corresponding to amino acids 640-900 of human STXBP5 (NP_640337.3).

Storage:

Store at -20°C. Avoid freeze / thaw cycles. Buffer: PBS with 0.02% sodium azide, 50% glycerol, pH7.3.

Product Images



Western blot analysis of extracts of HepG2 cells, using STXBP5 antibody (CAB16311) at 1:1000 dilution. Secondary antibody: HRP Goat Anti-Rabbit IgG (H+L) (CABS014) at 1:10000 dilution. Lysates/proteins: 25ug per lane. Blocking buffer: 3% nonfat dry milk in TBST. Detection: ECL Basic Kit (CABM00020). Exposure time: 90s.