

WBP2 Rabbit Polyclonal Antibody



CAB16312

Product Information

Size:

20uL, 50uL, 100uL, 200uL

Observed MW:

28kDa

Calculated MW:

28kDa

Applications:

WB

Reactivity:

Human, Mouse, Rat

Protein Background

The globular WW domain is composed of 38 to 40 semiconserved amino acids shared by proteins of diverse functions including structural, regulatory, and signaling proteins. The domain is involved in mediating protein-protein interactions through the binding of polyproline ligands. This gene encodes a WW domain binding protein that is a transcriptional coactivator of estrogen receptor alpha and progesterone receptor. Defects in this gene have been associated with hearing impairment.

Immunogen information

Gene ID:

23558

Uniprot

Q969T9

Synonyms:

WBP2; GRAMD6; WBP-2

Antibody Information

Recommended dilutions:

WB 1:500 - 1:2000

Source:

Rabbit

Isotype:

IgG

Purification:

Affinity purification

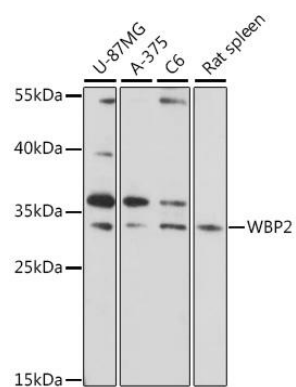
Immunogen:

Recombinant fusion protein containing a sequence corresponding to amino acids 15-140 of human WBP2 (NP_036610.2).

Storage:

Store at -20°C. Avoid freeze / thaw cycles. Buffer: PBS with 0.02% sodium azide, 50% glycerol, pH7.3.

Product Images



Western blot analysis of extracts of various cell lines, using WBP2 antibody (CAB16312) at 1:1000 dilution. Secondary antibody: HRP Goat Anti-Rabbit IgG (H+L) (CABS014) at 1:10000 dilution. Lysates/proteins: 25ug per lane. Blocking buffer: 3% nonfat dry milk in TBST. Detection: ECL Basic Kit (CABM00020). Exposure time: 120s.