

SOSTDC1 Rabbit Polyclonal Antibody



CAB16315

Product Information

Size:

20uL, 50uL, 100uL, 200uL

Observed MW:

26kDa

Calculated MW:

23kDa/26kDa

Applications:

WB

Reactivity:

Human, Mouse, Rat

Protein Background

This gene is a member of the sclerostin family and encodes an N-glycosylated, secreted protein with a C-terminal cystine knot-like domain. This protein functions as a bone morphogenetic protein (BMP) antagonist. Specifically, it directly associates with BMPs, prohibiting them from binding their receptors, thereby regulating BMP signaling during cellular proliferation, differentiation, and programmed cell death.

Immunogen information

Gene ID:

25928

Uniprot

Q6X4U4

Synonyms:

SOSTDC1; CDA019; DAND7; ECTODIN; USAG1

Antibody Information

Recommended dilutions:

WB 1:500 - 1:2000

Source:

Rabbit

Isotype:

IgG

Purification:

Affinity purification

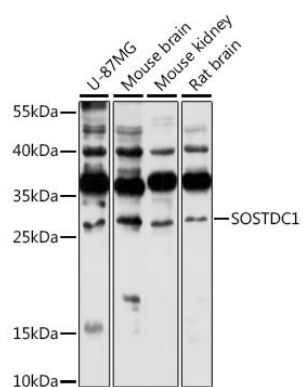
Immunogen:

Recombinant fusion protein containing a sequence corresponding to amino acids 115-206 of human SOSTDC1 (NP_056279.1).

Storage:

Store at -20°C. Avoid freeze / thaw cycles. Buffer: PBS with 0.02% sodium azide, 50% glycerol, pH7.3.

Product Images



Western blot analysis of extracts of various cell lines, using SOSTDC1 antibody (CAB16315) at 1:1000 dilution. Secondary antibody: HRP Goat Anti-Rabbit IgG (H+L) (CABS014) at 1:10000 dilution. Lysates/proteins: 25ug per lane. Blocking buffer: 3% nonfat dry milk in TBST. Detection: ECL Basic Kit (CABM00020). Exposure time: 3min.