

# FUT4 Rabbit Polyclonal Antibody



CAB16320

## Product Information

### Size:

20uL, 50uL, 100uL, 200uL

### Observed MW:

59KDa

### Calculated MW:

59kDa

### Applications:

WB IHC IF

### Reactivity:

Human, Mouse, Rat

## Protein Background

The product of this gene transfers fucose to N-acetyllactosamine polysaccharides to generate fucosylated carbohydrate structures. It catalyzes the synthesis of the non-sialylated antigen, Lewis x (CD15).

## Immunogen information

### Gene ID:

2526

### Uniprot

P22083

### Synonyms:

FUT4; CD15; ELFT; FCT3A; FUC-TIV; FUTIV; LeX; SSEA-1

## Antibody Information

### Recommended dilutions:

WB 1:500 - 1:2000 IHC 1:50  
- 1:200 IF 1:50 - 1:200

### Source:

Rabbit

### Isotype:

IgG

### Purification:

Affinity purification

### Immunogen:

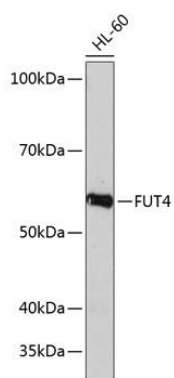
A synthetic peptide corresponding to a sequence within amino acids 200-300 of human FUT4 (NP\_002024.1).

### Storage:

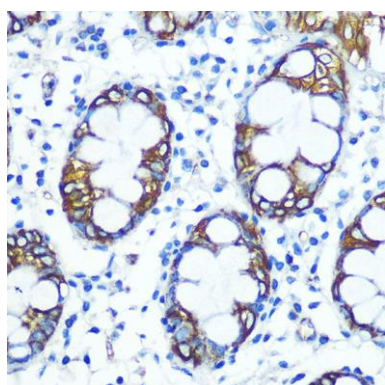
Store at -20°C. Avoid freeze / thaw cycles. Buffer: PBS with 0.02% sodium azide, 50% glycerol, pH7.3.

## Product Images

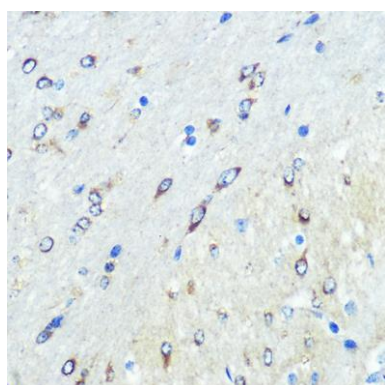
---



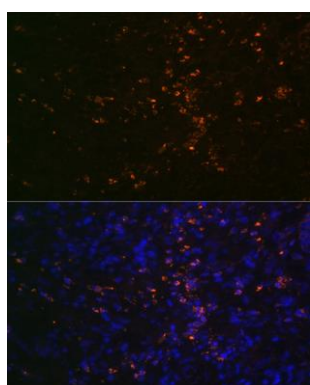
Western blot analysis of extracts of HL-60 cells, using FUT4 Polyclonal Antibody (CAB16320) at 1:1000 dilution. Secondary antibody: HRP Goat Anti-Rabbit IgG (H+L) (CABS014) at 1:10000 dilution. Lysates/proteins: 25ug per lane. Blocking buffer: 3% nonfat dry milk in TBST. Detection: ECL Basic Kit (CABM00020). Exposure time: 3min.



Immunohistochemistry of paraffin-embedded human colon using FUT4 Rabbit pAb (CAB16320) at dilution of 1:100 (40x lens).



Immunohistochemistry of paraffin-embedded mouse brain using FUT4 Rabbit pAb (CAB16320) at dilution of 1:100 (40x lens).



Immunofluorescence analysis of human colon carcinoma using FUT4 Rabbit pAb (CAB16320) at dilution of 1:100 (40x lens). Blue: DAPI for nuclear staining.