

DUSP15 Rabbit Polyclonal Antibody



CAB16322

Product Information

Size:

20uL, 50uL, 100uL, 200uL

Observed MW:

32kDa

Calculated MW:

14kDa/25kDa/26kDa/31kDa

Applications:

WB

Reactivity:

Human, Mouse, Rat

Protein Background

The protein encoded by this gene has both protein-tyrosine phosphatase activity and serine/threonine-specific phosphatase activity, and therefore is known as a dual specificity phosphatase. This protein may function in the differentiation of oligodendrocytes. Alternative splicing results in multiple transcript variants.

Immunogen information

Gene ID:

128853

Uniprot

Q9H1R2

Synonyms:

DUSP15; C20orf57; VHY

Antibody Information

Recommended dilutions:

WB 1:500 - 1:2000

Source:

Rabbit

Isotype:

IgG

Purification:

Affinity purification

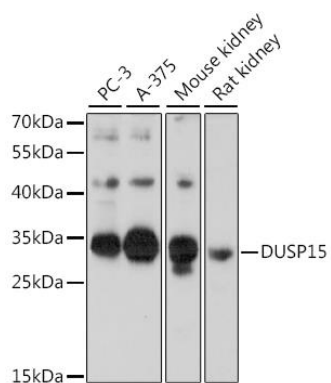
Immunogen:

Recombinant fusion protein containing a sequence corresponding to amino acids 10-90 of human DUSP15 (NP_542178.2).

Storage:

Store at -20°C. Avoid freeze / thaw cycles. Buffer: PBS with 0.02% sodium azide, 50% glycerol, pH7.3.

Product Images



Western blot analysis of extracts of various cell lines, using DUSP15 antibody (CAB16322) at 1:1000 dilution. Secondary antibody: HRP Goat Anti-Rabbit IgG (H+L) (CABS014) at 1:10000 dilution. Lysates/proteins: 25ug per lane. Blocking buffer: 3% nonfat dry milk in TBST. Detection: ECL Basic Kit (CABM00020). Exposure time: 30s.