

SON Rabbit Polyclonal Antibody



CAB16323

Product Information

Size:

20uL, 50uL, 100uL, 200uL

Observed MW:

250kDa

Calculated MW:

264kDa

Applications:

WB

Reactivity:

Human

Protein Background

This gene encodes a protein that contains multiple simple repeats. The encoded protein binds RNA and promotes pre-mRNA splicing, particularly of transcripts with poor splice sites. The protein also recognizes a specific DNA sequence found in the human hepatitis B virus (HBV) and represses HBV core promoter activity. There is a pseudogene for this gene on chromosome 1. Alternative splicing results in multiple transcript variants.

Immunogen information

Gene ID:

6651

Uniprot

P18583

Synonyms:

SON; BASS1; C21orf50; DBP-5; NREBP; SON3; TOKIMS

Antibody Information

Recommended dilutions:

WB 1:500 - 1:2000

Source:

Rabbit

Isotype:

IgG

Purification:

Affinity purification

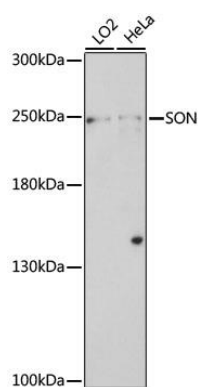
Immunogen:

A synthetic peptide corresponding to a sequence within amino acids 850-950 of human SON (NP_001278340.1).

Storage:

Store at -20°C. Avoid freeze / thaw cycles. Buffer: PBS with 0.02% sodium azide, 50% glycerol, pH7.3.

Product Images



Western blot analysis of extracts of various cell lines, using SON antibody (CAB16323) at 1:1000 dilution. Secondary antibody: HRP Goat Anti-Rabbit IgG (H+L) (CABS014) at 1:10000 dilution. Lysates/proteins: 25ug per lane. Blocking buffer: 3% nonfat dry milk in TBST. Detection: ECL Basic Kit (CABM00020). Exposure time: 8min.