

HMGR Rabbit Polyclonal Antibody



CAB1633

Product Information

Size:

20uL, 50uL, 100uL, 200uL

Observed MW:

97kDa

Calculated MW:

92kDa/97kDa/99kDa

Applications:

WB IHC IF

Reactivity:

Human, Mouse, Rat

Antibody Information

Recommended dilutions:

WB 1:1000 - 1:4000 IHC
1:50 - 1:100 IF 1:50 - 1:200

Source:

Rabbit

Isotype:

IgG

Purification:

Affinity purification

Protein Background

HMG-CoA reductase is the rate-limiting enzyme for cholesterol synthesis and is regulated via a negative feedback mechanism mediated by sterols and non-sterol metabolites derived from mevalonate, the product of the reaction catalyzed by reductase. Normally in mammalian cells this enzyme is suppressed by cholesterol derived from the internalization and degradation of low density lipoprotein (LDL) via the LDL receptor. Competitive inhibitors of the reductase induce the expression of LDL receptors in the liver, which in turn increases the catabolism of plasma LDL and lowers the plasma concentration of cholesterol, an important determinant of atherosclerosis. Alternatively spliced transcript variants encoding different isoforms have been found for this gene.

Immunogen information

Gene ID:

3156

Uniprot

P04035

Synonyms:

HMGR; LDLCQ3; HMGR

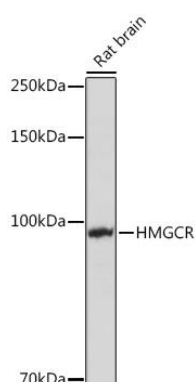
Immunogen:

Recombinant fusion protein containing a sequence corresponding to amino acids 629-888 of human HMGR (NP_000850.1).

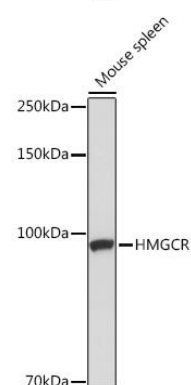
Storage:

Store at -20°C. Avoid freeze / thaw cycles. Buffer: PBS with 0.02% sodium azide, 50% glycerol, pH7.3.

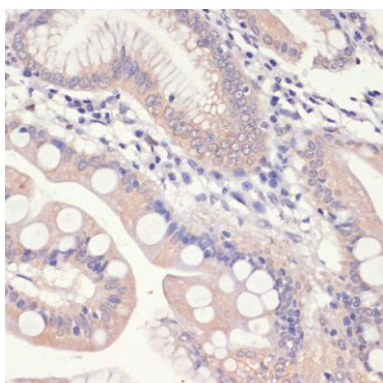
Product Images



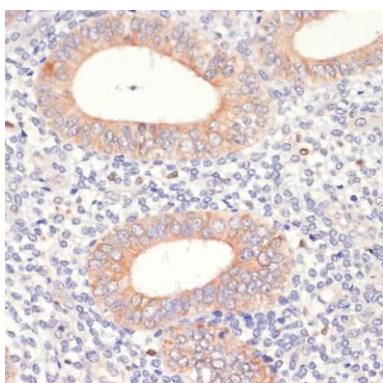
Western blot analysis of extracts of Rat brain, using HMGCR Rabbit pAb (CAB1633) at 1:1000 dilution. Secondary antibody: HRP Goat Anti-Rabbit IgG (H+L) (CABS014) at 1:10000 dilution. Lysates/proteins: 25ug per lane. Blocking buffer: 3% nonfat dry milk in TBST. Detection: ECL Basic Kit (CABM00020). Exposure time: 1s.



Western blot analysis of extracts of Mouse spleen, using HMGCR Rabbit pAb (CAB1633) at 1:1000 dilution. Secondary antibody: HRP Goat Anti-Rabbit IgG (H+L) (CABS014) at 1:10000 dilution. Lysates/proteins: 25ug per lane. Blocking buffer: 3% nonfat dry milk in TBST. Detection: ECL Basic Kit (CABM00020). Exposure time: 10s.



Immunohistochemistry of paraffin-embedded human small intestine using HMGCR antibody (CAB1633) at dilution of 1:200 (40x lens).



Immunohistochemistry of paraffin-embedded human uterine cancer using HMGCR antibody (CAB1633) at dilution of 1:200 (40x lens).