

# [KO Validated] HSPB1 Rabbit Polyclonal Antibody

## CAB16332



### Product Information

**Size:**

20uL, 50uL, 100uL, 200uL

**Observed MW:**

27KDa

**Calculated MW:**

22kDa

**Applications:**

WB IHC IF

**Reactivity:**

Human, Mouse, Rat

### Antibody Information

**Recommended dilutions:**

WB 1:500 - 1:2000 IHC 1:50  
- 1:200 IF 1:50 - 1:200

**Source:**

Rabbit

**Isotype:**

IgG

**Purification:**

Affinity purification

### Protein Background

The protein encoded by this gene is induced by environmental stress and developmental changes. The encoded protein is involved in stress resistance and actin organization and translocates from the cytoplasm to the nucleus upon stress induction. Defects in this gene are a cause of Charcot-Marie-Tooth disease type 2F (CMT2F) and distal hereditary motor neuropathy (dHMN).

### Immunogen information

**Gene ID:**

3315

**Uniprot**

P04792

**Synonyms:**

HSPB1; CMT2F; HEL-S-102; HMN2B; HS.76067; HSP27; HSP28;  
Hsp25; SRP27

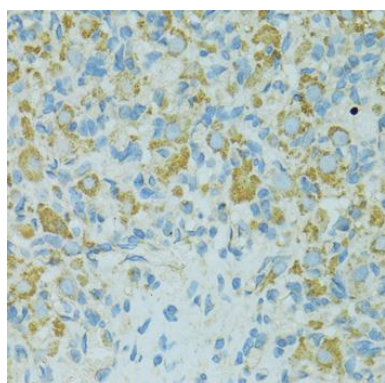
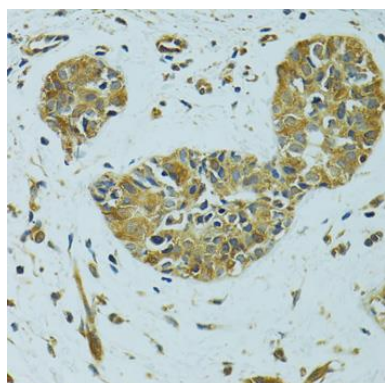
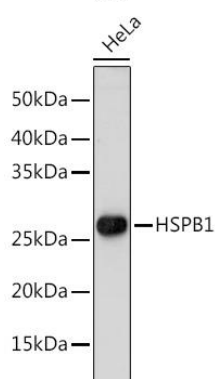
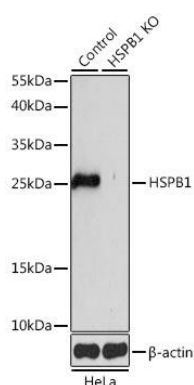
**Immunogen:**

Recombinant fusion protein containing a sequence corresponding to amino acids 1-120 of human HSPB1 (NP\_001531.1).

**Storage:**

Store at -20°C. Avoid freeze / thaw cycles. Buffer: PBS with 0.02% sodium azide, 50% glycerol, pH7.3.

## Product Images



Western blot analysis of extracts from normal (control) and HSPB1 knockout (KO) HeLa cells, using HSPB1 antibody (CAB16332) at 1:1000 dilution. Secondary antibody: HRP Goat Anti-Rabbit IgG (H+L) (CABS014) at 1:10000 dilution. Lysates/proteins: 25ug per lane. Blocking buffer: 3% nonfat dry milk in TBST. Detection: ECL Basic Kit (CABM00020). Exposure time: 5s.

Western blot analysis of extracts of HeLa cells, using HSPB1 antibody (CAB16332) at 1:1000 dilution. Secondary antibody: HRP Goat Anti-Rabbit IgG (H+L) (CABS014) at 1:10000 dilution. Lysates/proteins: 25ug per lane. Blocking buffer: 3% nonfat dry milk in TBST. Detection: ECL Basic Kit (CABM00020). Exposure time: 60s.

Immunohistochemistry of paraffin-embedded human breast cancer using HSPB1 antibody (CAB16332) at dilution of 1:100 (40x lens).

Immunohistochemistry of paraffin-embedded rat ovary using HSPB1 antibody (CAB16332) at dilution of 1:100 (40x lens).