

ABCA1 Rabbit Polyclonal Antibody



CAB16337

Product Information

Size:

20uL, 50uL, 100uL, 200uL

Observed MW:

270KDa

Calculated MW:

254kDa

Applications:

WB IHC IF

Reactivity:

Human, Mouse, Rat

Antibody Information

Recommended dilutions:

WB 1:500 - 1:2000 IHC 1:50
- 1:200 IF 1:50 - 1:200

Source:

Rabbit

Isotype:

IgG

Purification:

Affinity purification

Protein Background

The membrane-associated protein encoded by this gene is a member of the superfamily of ATP-binding cassette (ABC) transporters. ABC proteins transport various molecules across extra- and intracellular membranes. ABC genes are divided into seven distinct subfamilies (ABC1, MDR/TAP, MRP, ALD, OABP, GCN20, White). This protein is a member of the ABC1 subfamily. Members of the ABC1 subfamily comprise the only major ABC subfamily found exclusively in multicellular eukaryotes. With cholesterol as its substrate, this protein functions as a cholesterol efflux pump in the cellular lipid removal pathway. Mutations in this gene have been associated with Tangier's disease and familial high-density lipoprotein deficiency.

Immunogen information

Gene ID:

19

Uniprot

O95477

Synonyms:

ABCA1; ABC-1; ABC1; CERP; HDLDT1; TGD

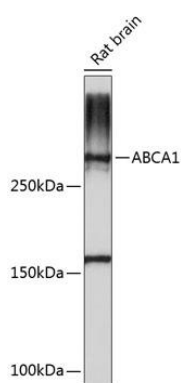
Immunogen:

Recombinant fusion protein containing a sequence corresponding to amino acids 1870-2120 of human ABCA1 (NP_005493.2).

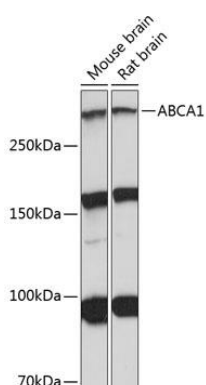
Storage:

Store at -20°C. Avoid freeze / thaw cycles. Buffer: PBS with 0.02% sodium azide, 50% glycerol, pH7.3.

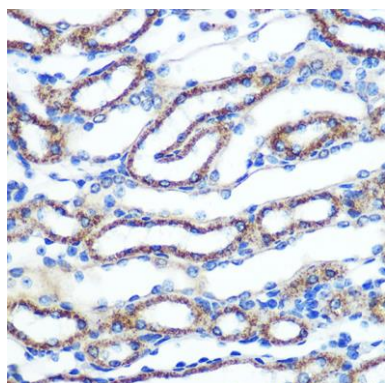
Product Images



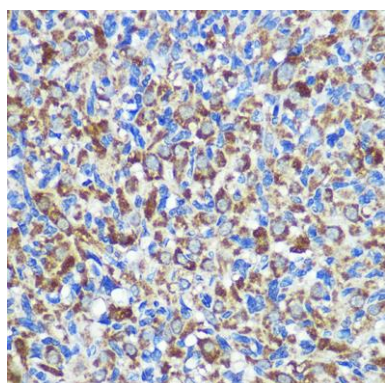
Western blot analysis of extracts of Rat brain, using ABCA1 Polyclonal Antibody (CAB16337) at 1:1000 dilution. Secondary antibody: HRP Goat Anti-Rabbit IgG (H+L) (CABS014) at 1:10000 dilution. Lysates/proteins: 25ug per lane. Blocking buffer: 3% nonfat dry milk in TBST. Detection: ECL Basic Kit (CABM00020). Exposure time: 3min.



Western blot analysis of extracts of various cell lines, using ABCA1 Polyclonal Antibody (CAB16337) at 1:1000 dilution. Secondary antibody: HRP Goat Anti-Rabbit IgG (H+L) (CABS014) at 1:10000 dilution. Lysates/proteins: 25ug per lane. Blocking buffer: 3% nonfat dry milk in TBST. Detection: ECL Basic Kit (CABM00020). Exposure time: 90s.



Immunohistochemistry of paraffin-embedded mouse kidney using ABCA1 Rabbit pAb (CAB16337) at dilution of 1:100 (40x lens).



Immunohistochemistry of paraffin-embedded rat ovary using ABCA1 Rabbit pAb (CAB16337) at dilution of 1:100 (40x lens).