

# AEBP1 Rabbit Polyclonal Antibody



CAB16340

---

## Product Information

### Size:

20uL, 50uL, 100uL, 200uL

### Observed MW:

131kDa

### Calculated MW:

82kDa/130kDa

### Applications:

WB IHC IF

### Reactivity:

Human, Mouse, Rat

## Protein Background

This gene encodes a member of carboxypeptidase A protein family. The encoded protein may function as a transcriptional repressor and play a role in adipogenesis and smooth muscle cell differentiation. Studies in mice suggest that this gene functions in wound healing and abdominal wall development. Overexpression of this gene is associated with glioblastoma.

## Immunogen information

### Gene ID:

165

### Uniprot

Q8IUX7

### Synonyms:

AEBP1; ACLP

## Antibody Information

### Recommended dilutions:

WB 1:500 - 1:2000 IHC 1:50  
- 1:100 IF 1:50 - 1:100

### Source:

Rabbit

### Isotype:

IgG

### Purification:

Affinity purification

### Immunogen:

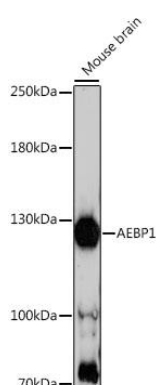
Recombinant fusion protein containing a sequence corresponding to amino acids 999-1158 of human AEBP1 (NP\_001120.3).

### Storage:

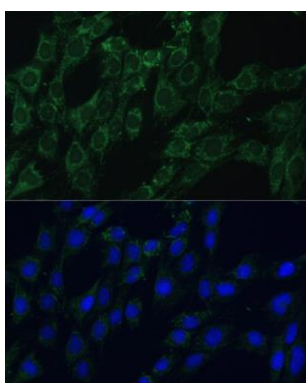
Store at -20°C. Avoid freeze / thaw cycles. Buffer: PBS with 0.02% sodium azide, 50% glycerol, pH7.3.

## Product Images

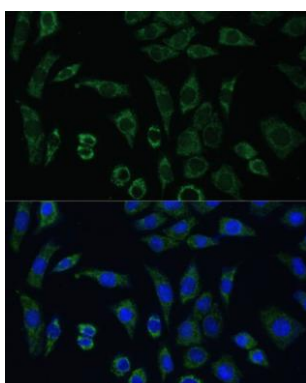
---



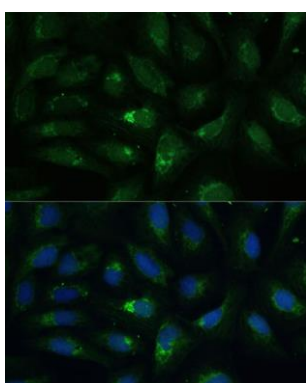
Western blot analysis of extracts of mouse brain, using AEBP1 antibody (CAB16340) at 1:1000 dilution. Secondary antibody: HRP Goat Anti-Rabbit IgG (H+L) (CABS014) at 1:10000 dilution. Lysates/proteins: 25ug per lane. Blocking buffer: 3% nonfat dry milk in TBST. Detection: ECL Basic Kit (CABM00020). Exposure time: 90s.



Immunofluorescence analysis of C6 cells using AEBP1 Polyclonal Antibody (CAB16340) at dilution of 1:100 (40x lens). Blue: DAPI for nuclear staining.



Immunofluorescence analysis of L929 cells using AEBP1 Polyclonal Antibody (CAB16340) at dilution of 1:100 (40x lens). Blue: DAPI for nuclear staining.



Immunofluorescence analysis of U-2 OS cells using AEBP1 Polyclonal Antibody (CAB16340) at dilution of 1:100 (40x lens). Blue: DAPI for nuclear staining.