

ARAF Rabbit Polyclonal Antibody



CAB16346

Product Information

Size:

20uL, 50uL, 100uL, 200uL

Observed MW:

Refer to figures

Calculated MW:

20kDa/67kDa

Applications:

WB IF

Reactivity:

Human, Mouse, Rat

Protein Background

This proto-oncogene belongs to the RAF subfamily of the Ser/Thr protein kinase family, and maybe involved in cell growth and development. Alternatively spliced transcript variants encoding different isoforms have been found for this gene.

Immunogen information

Gene ID:

369

Uniprot

P10398

Synonyms:

ARAF; A-RAF; ARAF1; PKS2; RAFA1

Antibody Information

Recommended dilutions:

WB 1:500 - 1:2000 IF 1:50 - 1:200

Source:

Rabbit

Isotype:

IgG

Purification:

Affinity purification

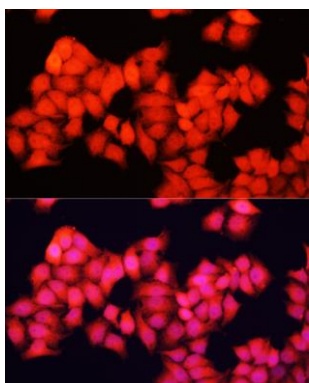
Immunogen:

Recombinant fusion protein containing a sequence corresponding to amino acids 371-606 of human ARAF (NP_001645.1).

Storage:

Store at -20°C. Avoid freeze / thaw cycles. Buffer: PBS with 0.02% sodium azide, 50% glycerol, pH7.3.

Product Images



Immunofluorescence analysis of HeLa cells using ARAF antibody (CAB16346) at dilution of 1:100. Blue: DAPI for nuclear staining.