

ASMT Rabbit Polyclonal Antibody



CAB16349

Product Information

Size:

20uL, 50uL, 100uL, 200uL

Observed MW:

Calculated MW:

33kDa/38kDa/41kDa

Applications:

IHC

Reactivity:

Human, Mouse

Antibody Information

Recommended dilutions:

IHC 1:50 - 1:200

Source:

Rabbit

Isotype:

IgG

Purification:

Affinity purification

Protein Background

This gene belongs to the methyltransferase superfamily, and is located in the pseudoautosomal region (PAR) at the end of the short arms of the X and Y chromosomes. The encoded enzyme catalyzes the final reaction in the synthesis of melatonin, and is abundant in the pineal gland. Alternatively spliced transcript variants have been noted for this gene.

Immunogen information

Gene ID:

438

Uniprot

P46597

Synonyms:

ASMT; ASMTY; HIOMT; HIOMTY

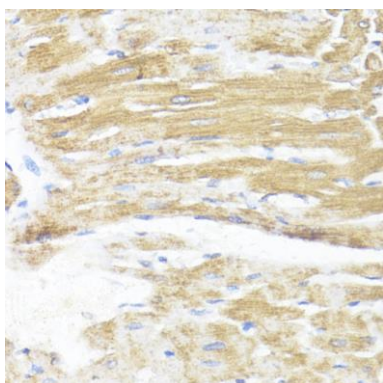
Immunogen:

Recombinant fusion protein containing a sequence corresponding to amino acids 1-298 of human ASMT (NP_001164510.1).

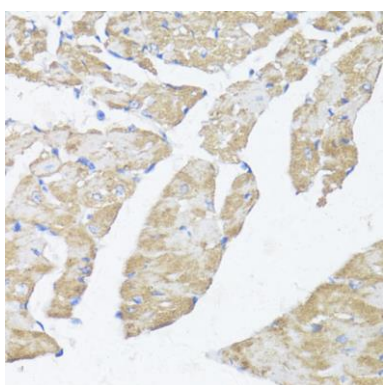
Storage:

Store at -20°C. Avoid freeze / thaw cycles. Buffer: PBS with 0.02% sodium azide, 50% glycerol, pH7.3.

Product Images



Immunohistochemistry of paraffin-embedded rat heart using ASMT antibody (CAB16349) at dilution of 1:100 (40x lens).



Immunohistochemistry of paraffin-embedded mouse heart using ASMT antibody (CAB16349) at dilution of 1:100 (40x lens).