

HMGA1 Rabbit Polyclonal Antibody



CAB1635

Product Information

Size:

20uL, 50uL, 100uL, 200uL

Observed MW:

20kDa

Calculated MW:

10kDa/11kDa/19kDa

Applications:

WB IHC IF

Reactivity:

Human

Antibody Information

Recommended dilutions:

WB 1:500 - 1:2000 IHC 1:50
- 1:200 IF 1:50 - 1:200

Source:

Rabbit

Isotype:

IgG

Purification:

Affinity purification

Protein Background

This gene encodes a chromatin-associated protein involved in the regulation of gene transcription, integration of retroviruses into chromosomes, and the metastatic progression of cancer cells. The encoded protein preferentially binds to the minor groove of AT-rich regions in double-stranded DNA. Multiple transcript variants encoding different isoforms have been found for this gene. Pseudogenes of this gene have been identified on multiple chromosomes.

Immunogen information

Gene ID:

3159

Uniprot

P17096

Synonyms:

HMGA1; HMG-R; HMGA1A; HMG1Y

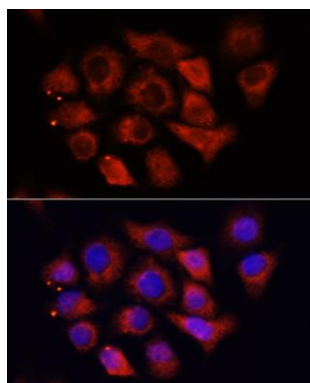
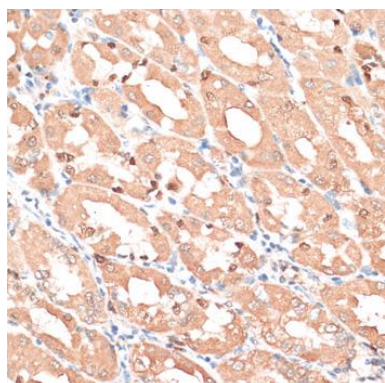
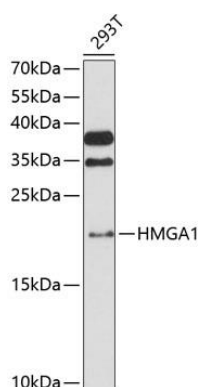
Immunogen:

A synthetic peptide corresponding to a sequence within amino acids 1-100 of human HMGA1 (NP_665908.1).

Storage:

Store at -20°C. Avoid freeze / thaw cycles. Buffer: PBS with 0.02% sodium azide, 50% glycerol, pH7.3.

Product Images



Western blot analysis of extracts of 293T cells, using HMGA1 antibody (CAB1635) at 1:3000 dilution. Secondary antibody: HRP Goat Anti-Rabbit IgG (H+L) (CABS014) at 1:10000 dilution. Lysates/proteins: 25ug per lane. Blocking buffer: 3% nonfat dry milk in TBST. Detection: ECL Enhanced Kit (CABM00021). Exposure time: 90s.

Immunohistochemistry of paraffin-embedded human stomach using HMGA1 antibody (CAB1635) at dilution of 1:100 (40x lens).

Immunofluorescence analysis of HeLa cells using HMGA1 antibody (CAB1635) at dilution of 1:100 (40x lens). Blue: DAPI for nuclear staining.