

# MYRF Rabbit Polyclonal Antibody



CAB16355

---

## Product Information

### Size:

20uL, 50uL, 100uL, 200uL

### Observed MW:

124kDa

### Calculated MW:

120kDa/124kDa

### Applications:

WB

### Reactivity:

Human, Mouse

## Antibody Information

### Recommended dilutions:

WB 1:500 - 1:2000

### Source:

Rabbit

### Isotype:

IgG

### Purification:

Affinity purification

## Protein Background

This gene encodes a transcription factor that is required for central nervous system myelination and may regulate oligodendrocyte differentiation. It is thought to act by increasing the expression of genes that effect myelin production but may also directly promote myelin gene expression. Loss of a similar gene in mouse models results in severe demyelination. Alternative splicing results in multiple transcript variants.

## Immunogen information

### Gene ID:

745

### Uniprot

Q9Y2G1

### Synonyms:

MYRF; C11orf9; MRF; Ndt80; pqn-47

### Immunogen:

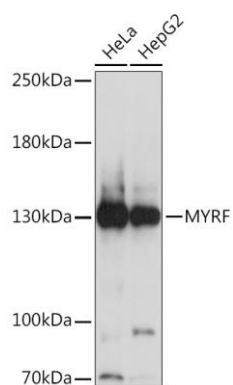
A synthetic peptide corresponding to a sequence within amino acids 1-100 of human MYRF (NP\_001120864.1).

### Storage:

Store at -20°C. Avoid freeze / thaw cycles. Buffer: PBS with 0.02% sodium azide, 50% glycerol, pH7.3.

## Product Images

---



Western blot analysis of extracts of various cell lines, using MYRF Rabbit pAb (CAB16355) at 1:1000 dilution. Secondary antibody: HRP Goat Anti-Rabbit IgG (H+L) (CABS014) at 1:10000 dilution. Lysates/proteins: 25ug per lane. Blocking buffer: 3% nonfat dry milk in TBST. Detection: ECL Basic Kit (CABM00020). Exposure time: 5s.