

CDK6 Rabbit Polyclonal Antibody



CAB16357

Product Information

Size:

20uL, 50uL, 100uL, 200uL

Observed MW:

37kDa

Calculated MW:

36kDa

Applications:

WB IHC IF

Reactivity:

Human, Mouse, Rat

Antibody Information

Recommended dilutions:

WB 1:500 - 1:2000 IHC 1:50
- 1:200 IF 1:50 - 1:200

Source:

Rabbit

Isotype:

IgG

Purification:

Affinity purification

Protein Background

The protein encoded by this gene is a member of the cyclin-dependent protein kinase (CDK) family. CDK family members are highly similar to the gene products of *Saccharomyces cerevisiae cdc28*, and *Schizosaccharomyces pombe cdc2*, and are known to be important regulators of cell cycle progression. This kinase is a catalytic subunit of the protein kinase complex that is important for cell cycle G1 phase progression and G1/S transition. The activity of this kinase first appears in mid-G1 phase, which is controlled by the regulatory subunits including D-type cyclins and members of INK4 family of CDK inhibitors. This kinase, as well as CDK4, has been shown to phosphorylate, and thus regulate the activity of, tumor suppressor protein Rb. Expression of this gene is up-regulated in some types of cancer. Multiple alternatively spliced variants, encoding the same protein, have been identified.

Immunogen information

Gene ID:

1021

Uniprot

Q00534

Synonyms:

CDK6; MCPH12; PLSTIRE

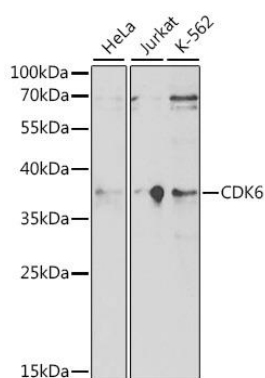
Immunogen:

Recombinant fusion protein containing a sequence corresponding to amino acids 1-326 of human CDK6 (NP_001250.1).

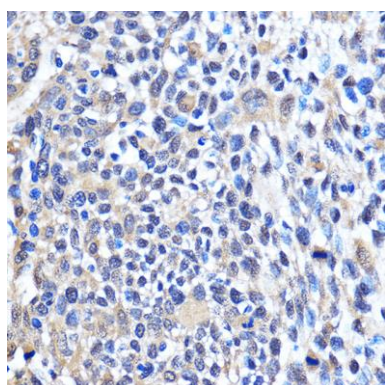
Storage:

Store at -20°C. Avoid freeze / thaw cycles. Buffer: PBS with 0.02% sodium azide, 50% glycerol, pH7.3.

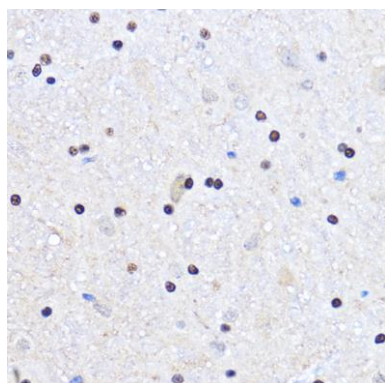
Product Images



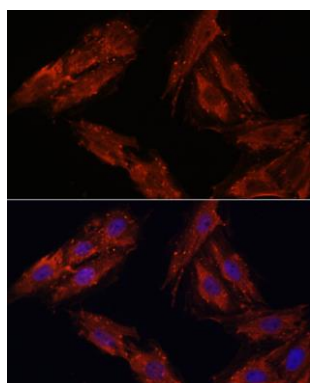
Western blot analysis of extracts of various cell lines, using CDK6 antibody (CAB16357) at 1:1000 dilution. Secondary antibody: HRP Goat Anti-Rabbit IgG (H+L) (CABS014) at 1:10000 dilution. Lysates/proteins: 25ug per lane. Blocking buffer: 3% nonfat dry milk in TBST.



Immunohistochemistry of paraffin-embedded Human esophageal using CDK6 Rabbit pAb (CAB16357) at dilution of 1:100 (40x lens).



Immunohistochemistry of paraffin-embedded Rat brain using CDK6 Rabbit pAb (CAB16357) at dilution of 1:100 (40x lens).



Immunofluorescence analysis of H9C2 cells using CDK6 antibody (CAB16357) at dilution of 1:100. Blue: DAPI for nuclear staining.