

# FGD1 Rabbit Polyclonal Antibody



CAB16374

## Product Information

### Size:

20uL, 50uL, 100uL, 200uL

### Observed MW:

110kDa

### Calculated MW:

106kDa

### Applications:

WB IHC IF

### Reactivity:

Human, Mouse, Rat

## Protein Background

This gene encodes a protein that contains Dbl (DH) and pleckstrin (PH) homology domains and is similar to the Rho family of small GTP-binding proteins. The encoded protein specifically binds to the Rho family GTPase Cdc42Hs and can stimulate the GDP-GTP exchange of the isoprenylated form of Cdc42Hs. It also stimulates the mitogen activated protein kinase cascade leading to c-Jun kinase SAPK/JNK1 activation. Defects in this gene are the cause of faciogenital dysplasia and X-linked mental retardation, syndromatic 16.

## Immunogen information

### Gene ID:

2245

### Uniprot

P98174

### Synonyms:

FGD1; AAS; FGDY; MRXS16; ZFYVE3; FYVE

## Antibody Information

### Recommended dilutions:

WB 1:500 - 1:2000 IHC 1:50  
- 1:100 IF 1:50 - 1:100

### Source:

Rabbit

### Isotype:

IgG

### Purification:

Affinity purification

### Immunogen:

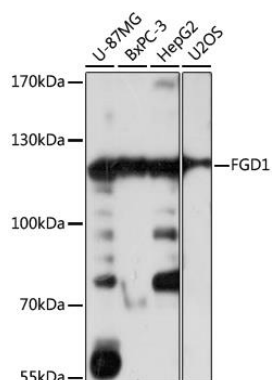
A synthetic peptide corresponding to a sequence within amino acids 700-800 of human FGD1 (NP\_004454.2).

### Storage:

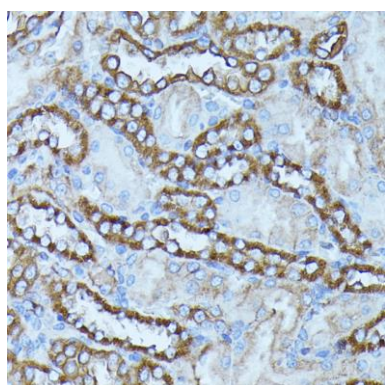
Store at -20°C. Avoid freeze / thaw cycles. Buffer: PBS with 0.02% sodium azide, 50% glycerol, pH7.3.

## Product Images

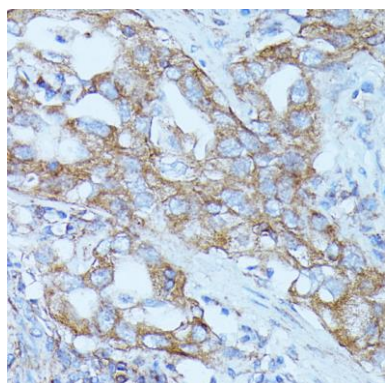
---



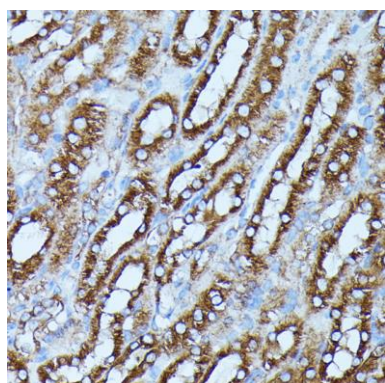
Western blot analysis of extracts of various cell lines, using FGD1 antibody (CAB16374) at 1:1000 dilution. Secondary antibody: HRP Goat Anti-Rabbit IgG (H+L) (CABS014) at 1:10000 dilution. Lysates/proteins: 25ug per lane. Blocking buffer: 3% nonfat dry milk in TBST. Detection: ECL Basic Kit (CABM00020). Exposure time: 1s.



Immunohistochemistry of paraffin-embedded rat kidney using FGD1 antibody (CAB16374) at dilution of 1:100 (40x lens).



Immunohistochemistry of paraffin-embedded human lung cancer using FGD1 antibody (CAB16374) at dilution of 1:100 (40x lens).



Immunohistochemistry of paraffin-embedded mouse kidney using FGD1 antibody (CAB16374) at dilution of 1:100 (40x lens).