

# FKBP1B Rabbit Polyclonal Antibody



CAB16375

## Product Information

### Size:

20uL, 50uL, 100uL, 200uL

### Observed MW:

13kDa

### Calculated MW:

8kDa/11kDa

### Applications:

WB IHC IF

### Reactivity:

Human, Mouse, Rat

## Protein Background

The protein encoded by this gene is a member of the immunophilin protein family, which play a role in immunoregulation and basic cellular processes involving protein folding and trafficking. This encoded protein is a cis-trans prolyl isomerase that binds the immunosuppressants FK506 and rapamycin. It is highly similar to the FK506-binding protein 1A. Its physiological role is thought to be in excitation-contraction coupling in cardiac muscle. There are two alternatively spliced transcript variants of this gene encoding different isoforms.

## Immunogen information

### Gene ID:

2281

### Uniprot

P68106

### Synonyms:

FKBP1B; FKBP12.6; FKBP1L; OTK4; PKBP1L; PPlase

## Antibody Information

### Recommended dilutions:

WB 1:500 - 1:2000 IHC 1:50  
- 1:100 IF 1:50 - 1:100

### Source:

Rabbit

### Isotype:

IgG

### Purification:

Affinity purification

### Immunogen:

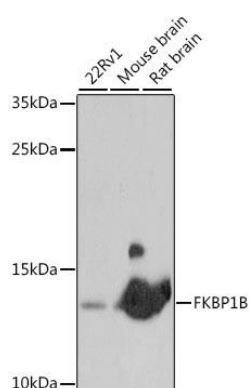
A synthetic peptide corresponding to a sequence within amino acids 1-80 of human FKBP1B (NP\_473374.1).

### Storage:

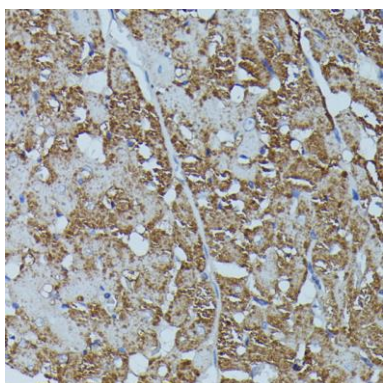
Store at -20°C. Avoid freeze / thaw cycles. Buffer: PBS with 0.02% sodium azide, 50% glycerol, pH7.3.

## Product Images

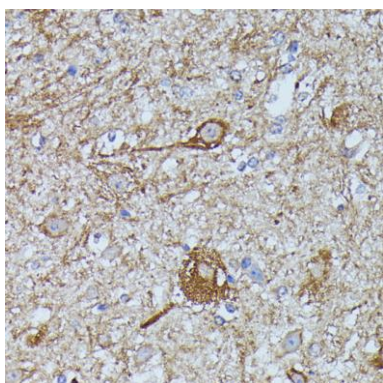
---



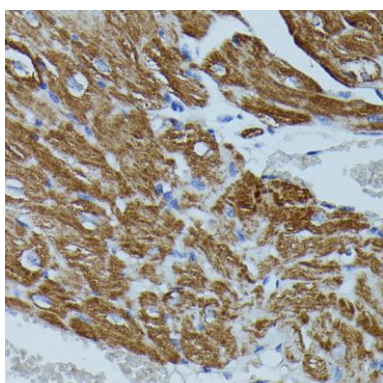
Western blot analysis of extracts of various cell lines, using FKBP1B antibody (CAB16375) at 1:1000 dilution. Secondary antibody: HRP Goat Anti-Rabbit IgG (H+L) (CABS014) at 1:10000 dilution. Lysates/proteins: 25ug per lane. Blocking buffer: 3% nonfat dry milk in TBST. Detection: ECL Basic Kit (CABM00020). Exposure time: 10s.



Immunohistochemistry of paraffin-embedded rat heart using FKBP1B antibody (CAB16375) at dilution of 1:100 (40x lens).



Immunohistochemistry of paraffin-embedded mouse spinal cord using FKBP1B antibody (CAB16375) at dilution of 1:100 (40x lens).



Immunohistochemistry of paraffin-embedded mouse heart using FKBP1B antibody (CAB16375) at dilution of 1:100 (40x lens).