

CAB16376

Product Information

Size:

20uL, 50uL, 100uL, 200uL

Observed MW:

300kDa

Calculated MW:

280kDa

Applications:

WB IHC IF

Reactivity:

Human, Mouse, Rat

Antibody Information

Recommended dilutions:

WB 1:500 - 1:2000 IHC 1:50
- 1:200 IF 1:50 - 1:200

Source:

Rabbit

Isotype:

IgG

Purification:

Affinity purification

Protein Background

The protein encoded by this gene is an actin-binding protein that crosslinks actin filaments and links actin filaments to membrane glycoproteins. The encoded protein is involved in remodeling the cytoskeleton to effect changes in cell shape and migration. This protein interacts with integrins, transmembrane receptor complexes, and second messengers. Defects in this gene are a cause of several syndromes, including periventricular nodular heterotopias (PVNH1, PVNH4), otopalatodigital syndromes (OPD1, OPD2), frontometaphyseal dysplasia (FMD), Melnick-Needles syndrome (MNS), and X-linked congenital idiopathic intestinal pseudoobstruction (CIIPX). Two transcript variants encoding different isoforms have been found for this gene.

Immunogen information

Gene ID:

2316

Uniprot

P21333

Synonyms:

FLNA; ABP-280; ABPX; CSBS; CVD1; FLN; FLN-A; FLN1; FMD; MNS; NHBP; OPD; OPD1; OPD2; XLVD; XMVD; filamin-A

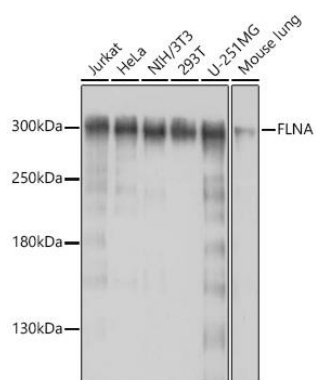
Immunogen:

A synthetic peptide corresponding to a sequence within amino acids 2500 to the C-terminus of human FLNA (NP_001104026.1).

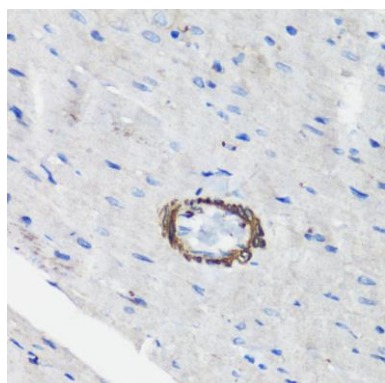
Storage:

Store at -20°C. Avoid freeze / thaw cycles. Buffer: PBS with 0.02% sodium azide, 50% glycerol, pH7.3.

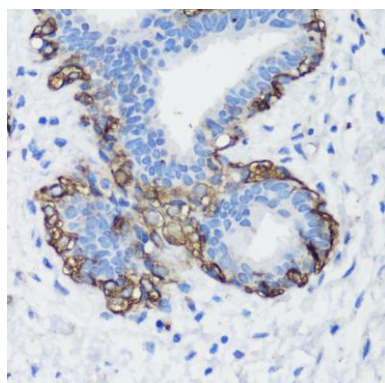
Product Images



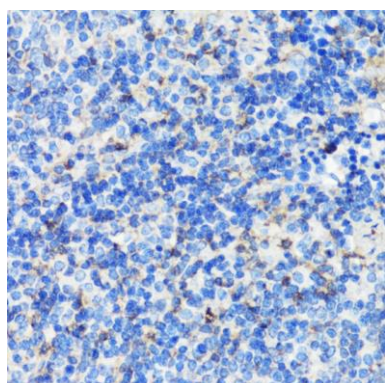
Western blot analysis of extracts of various cell lines, using FLNA antibody (CAB16376) at 1:1000 dilution. Secondary antibody: HRP Goat Anti-Rabbit IgG (H+L) (CABS014) at 1:10000 dilution. Lysates/proteins: 25ug per lane. Blocking buffer: 3% nonfat dry milk in TBST. Detection: ECL Basic Kit (CABM00020). Exposure time: 30s.



Immunohistochemistry of paraffin-embedded rat heart using FLNA antibody (CAB16376) at dilution of 1:100 (40x lens).



Immunohistochemistry of paraffin-embedded human breast cancer using FLNA antibody (CAB16376) at dilution of 1:100 (40x lens).



Immunohistochemistry of paraffin-embedded mouse spleen using FLNA antibody (CAB16376) at dilution of 1:100 (40x lens).